



# SFCR

Solvency and Financial  
Condition Report  
as of 31 December 2021

# 21

# Table of contents

- List of abbreviations ..... 4
- Summary..... 5
- A. BUSINESS AND PERFORMANCE ..... 7**
  - A.1 Business ..... 7
  - A.2 Underwriting performance ..... 9
  - A.3 Investment performance.....11
  - A.4 Performance of other activities .....13
  - A.5 Any other information .....13
- B. SYSTEM OF GOVERNANCE.....14**
  - B.1 General information on the system of governance .....14
  - B.2 Fit and proper requirements .....20
  - B.3 Risk management system .....23
  - B.4 Internal control system .....29
  - B.5 Internal Audit function.....31
  - B.6 Actuarial function.....32
  - B.7 Outsourcing.....32
  - B.8 Any other information .....33
- C. RISK PROFILE.....34**
  - C.1 Underwriting risk .....35
  - C.2 Market risk .....40
  - C.3 Credit risk.....43
  - C.4 Liquidity risk .....44
  - C.5 Operational risk .....45
  - C.6 Other fundamental risks .....47
  - C.7 Other information .....48
- D. VALUATION FOR SOLVENCY PURPOSES .....50**
  - D.1 Assets .....53
  - D.2 Technical provisions.....58
  - D.3 Other liabilities.....66
  - D.4 Alternative methods of valuation.....67
  - D.5 Other information .....68
- E. CAPITAL MANAGEMENT .....69**
  - E.1 Own funds.....69
  - E.2 SCR and MCR .....72
  - E.3 Use of the duration-based equity-risk sub-module in the calculation of the Solvency Capital Requirement .....74
  - E.4 Differences between the standard formula and any internal models used .....75

E.5	Non-compliance with the Minimum Capital Requirement and non-compliance with the Solvency Capital Requirement.....	75
E.6	Any other information .....	75
<b>Annex</b>	.....	<b>77</b>
<b>Glossary</b>	.....	<b>94</b>
<b>Independent Auditor’s Report</b>	.....	<b>95</b>

**Note with regard to figures and rounding:**

In general, figures are presented as per thousand EUR (kEUR) As a result of the use of automatic calculation aids, calculation differences caused by rounding may occur when adding up rounded amounts and percentages. Unless specified differently, calculations are based on data as per balance sheet date 31 December 2021.

**Pictures:** Shutterstock

**Copyright:** GRAWE Reinsurance Ltd.

## List of abbreviations

Adj <sub>DT</sub>	Adjustment term for deferred taxes
Adj <sub>TP</sub>	Adjustment term for technical provisions
AG	Aktiengesellschaft (joint Stock corporation)
Art.	Article
BE	Best Estimate
BSCR	Basic solvency capital requirement of Pillar 1
CCL	Cyprus Company Law
cf.	Latin: <i>confer</i>
CoC	Cost of Capital
EC	European Commission
ECB	European Central Bank
e.g.	Latin: <i>exempli gratia</i>
EIOPA	European Insurance and Occupational Pensions Authority from 01 January 2011
EPIFP	Expected Profits Included in Future Premiums
etc.	etcetera
GRAWE	Grazer Wechselseitige Versicherung Aktiengesellschaft
HR	Human Resources
HRG	Homogeneous risk group
i.e.	in other words
IAS/IFRS	International accounting standards in the respective last valid version endorsed by the EU
IBNR	incurred but not reported
ICCS	Insurance Companies Control Service
incl.	including
IS	Income statement
ISR	Interest supplement reserve
LAW	The Law on Insurance and Reinsurance Business and other Related issues of 2016 and additional Orders and Guidelines issued from the Superintendent
LoB	Line of Business
Ltd.	Limited
MCR	Minimum capital requirement
OECD	Organisation for Economic Cooperation and Development
ORSA	Own risk and solvency assessment of Pillar 2
Par.	Paragraph
PZV	Subsidised retirement investment products
SCR	Solvency capital requirement of Pillar 1
SI	Superintendent of Insurance
TÜV	Technical Inspection Association (German: Technischer Überwachungsverein)
VaR	The Value at Risk (VaR) denotes the threshold value that with the determined probability (=confidence level) is not exceeded within a defined period of time (=holding period).
VaR95	The Value at Risk that denotes the threshold value that is not exceeded within a defined period of time with a 95% probability.

## Summary

GRAWE Reinsurance Ltd. (hereafter referred to as GRAWE RE) is a subsidiary of Grazer Wechselseitige Versicherung AG, an Austrian company which has grown since its initial founding by Archduke Johann of Austria in 1828 from its original form as a fire damage insurer into an international group in Central and Eastern Europe which unites insurance undertakings, real estate and financial services under one roof.

GRAWE RE was founded in 1999 and focuses mainly on proportional life and non-life reinsurance of the subsidiaries of Grazer Wechselseitige Versicherung AG.

### A Business and Results

In the reporting year in the two business segments non-life reinsurance and life reinsurance, GRAWE RE generated in total written premiums of kEUR 14,699 (2020: kEUR 17,431) with focus on fire and other damage to property reinsurance, general liability, income protection and life reinsurance. The premiums written are offset by claims incurred amounting to kEUR 5,086 (2020: kEUR 6,266). In the reporting year in the annual financial statements according to IFRS, earnings before taxes in the amount of kEUR 13,094 (2020: kEUR 11,195) were generated.

The income from investments (incl. liquid funds) in the annual financial statements according to IFRS of GRAWE RE amounted to kEUR 10,279 (2020: kEUR 8,008). The most important goal in the investment is the continuous ensuring of the ongoing ability to fulfil the obligations from the reinsurance contracts.

### B System of Governance

The system of governance means the management and control system of GRAWE RE. The organisation, tasks and authorisations of the Governance functions are defined in company-internal policies. In addition, the system of governance guarantees compliance with the compensation and outsourcing regulations as well as the fit and proper requirements of the Board of Directors and of key function holders.

Regarding the key functions following changes can be reported within the year 2021:

- Dr. Thomas Hlatky – Compliance function until 30 November 2021
- Mr. Christos Voniatis, LL.M. – Compliance function starting from 1 December 2021

### C Risk Profile

The risk profile of GRAWE RE remains unchanged in comparison to previous year. The main risk categories for the solvency capital requirement (SCR) according to the Solvency II standard formula are the market risk, the underwriting risk Non-Life and cumulatively the credit risk and underwriting risk Health.

Furthermore, the capital requirement of internal risk view that was determined within the ORSA process is far below the solvency capital requirement according to the standard formula.

## **D Valuation for Solvency Purposes**

The eligible own funds are determined on the basis of the economic balance sheet as surplus of the assets over liabilities. In the economic balance sheet, the assets and liabilities are set at market values.

This results in a valuation that deviates from the annual financial statements according to IFRS that have been approved and signed by the Board of Directors on 6 April 2022.

The differences between the technical provisions according to IFRS and the Best Estimates in the economic balance sheet result from the different perspectives and calculation methods. Additionally, the deviations come from the valuation of the investments in subsidiaries and the deferred tax liability. All remaining assets and liabilities remain the same. Due to the high solvency ratio, the use of any LTG transitional measure like volatility and matching adjustments were not considered.

## **E Capital Management**

As at 31 December 2021 the SCR amounted to kEUR 42,503 (2020: kEUR 37,765). The superb own funds with the amount of kEUR 241,476 (2020: kEUR 221,407), make it possible for GRAWE RE to be a strong and reliable partner in years to come and provides the necessary reliability to the existing and future customers.

The SCR ratio, i.e. the comparison of the eligible own funds to the solvency capital requirement based on the calculations of the standard formula is as at 31 December 2021 568.1% (2020: 586.3%). The MCR of GRAWE RE was kEUR 10,626 (2020: kEUR 9,441). The ratio of the eligible own funds to the MCR amounted to 2272.5% (2020: 2345.1%).

The requirements to cover the SCR were constantly fulfilled during the whole reporting period.

## **Statement of the Board of Directors**

The following solvency and financial condition report of GRAWE RE was prepared in all conscience in accordance with the law and the corresponding European regulations. It provides the truest possible reflection of the solvency and financial condition and gives a description on the business, the system of governance, the risk profile and the assets, liabilities and own funds as well as the solvency balance sheet.

This report was approved for publication with the resolution by the Board of Directors dated 6 April 2022.

# A. BUSINESS AND PERFORMANCE

## A.1 Business

### A.1.1 Business strategy

The business strategy of GRAWE RE focuses on proportional life and non-life reinsurance of the subsidiaries of Grazer Wechselseitige Versicherung AG, which are situated in Central and Eastern European countries (CEE) and make up 90% of all reinsurance treaties. The remaining 10% are attributable to contracts with external international clients.

Our external clients are from well-known markets and have already been several years reinsured at Grazer Wechselseitige Versicherung AG before they became clients of GRAWE RE. Therefore, these clients meet our main targets, namely security, long lasting customer relationship and knowledge of the written risk categories. Furthermore, to minimize the risk, the share on the maximum amount of cover of these contracts is very low.

As long-lasting relationships with clients and mutual trust are essential for the business of GRAWE RE, almost all reinsurance contracts are concluded directly with clients, thus almost no brokers are involved in negotiations and conclusion of contracts.

As of 31 December 2021, 51% of premiums written of GRAWE RE are attributed to non-life reinsurance and 49% to life reinsurance.

As far as investments are concerned, a high importance is attached to security and long-term success and profit, in compliance with the legal provisions. This is reflected by long-term successful and security-oriented investments, for which market bets in the capital investment area as well as not transparent and complex products are generally renounced. In addition, defined spreads and limits exist per asset category.

Based on the above mentioned business principles, the following risk-related principles can be derived for GRAWE RE:

1. Safeguarding the continuance and sustainable prosperity of the company
2. Safeguarding the financial objectives
3. Achievement of the strategic objectives
4. Compliance with the legal provisions
5. Customer oriented service

The risk management and the internal control systems of GRAWE RE are aligned with the strategy of the company and thus ensure that both the financial and the strategic objectives are achieved as well as the legal and Solvency requirements are fulfilled.

### A.1.2 Ownership structure and group affiliation

GRAWE RE is a 100% subsidiary of Grazer Wechselseitige Versicherung AG. At the top of GRAWE Group and as direct majority owner of Grazer Wechselseitige Versicherung AG, with shares in the volume of 100% of its capital, there is GRAWE-Vermögensverwaltung, with its

registered office in Graz, a mutual insurance association and a mixed financial holding company pursuant to the Financial Conglomerate Act.

GRAWE RE is incorporated entirely into the consolidated annual financial statements of GRAWE-Vermögensverwaltung, 8010 Graz, Herrengasse 18-20.

The following simplified GRAWE Group structure shows the integration of GRAWE RE in GRAWE Group as of 31 December 2021:



**Affiliated undertakings**

As of 31 December 2021 GRAWE RE was 100% owner of:

- Medlife Insurance Ltd.
- Flutrana Enterprises Ltd.

**A.1.3 Auditor**

The annual financial statements of GRAWE RE are audited by the appointed auditing and tax consulting company, KPMG Ltd., as of the balance sheet reference date 31 December 2021.

**Contact details:**

KPMG Limited  
14 Esperidon  
1087 Nicosia  
Cyprus  
Tel: +357 22 209 000  
[www.kpmg.com.cy](http://www.kpmg.com.cy)

**A.1.4 Supervisory authority**

The responsible supervisory authority for GRAWE RE is the Superintendent of Insurance (SI) which is also the Head of the (Re-)insurance Companies Control Service (ICCS).



**Contact details:**

(Re-)insurance Companies Control Service (ICCS)  
P.O. Box 23364,  
1682 Nicosia  
Cyprus  
Tel.: +357 22 602 952  
<http://mof.gov.cy/en/directorates-units/insurance-companies-control-service>

## A.2 Underwriting performance

The following tables provide an overview of the underwriting performance according to the IFRS financial statements for non-life and life reinsurance.

	Premiums written		Earned premiums	
	2021	2020	2021	2020
<b>Gross amount</b>	kEUR	kEUR	kEUR	kEUR
Non-life reinsurance	7,457	10,732	7,364	10,663
Life reinsurance	7,242	6,699	7,065	6,761
<b>Total</b>	<b>14,699</b>	<b>17,431</b>	<b>14,429</b>	<b>17,424</b>

The following table gives an overview of claims incurred and operating expenses:

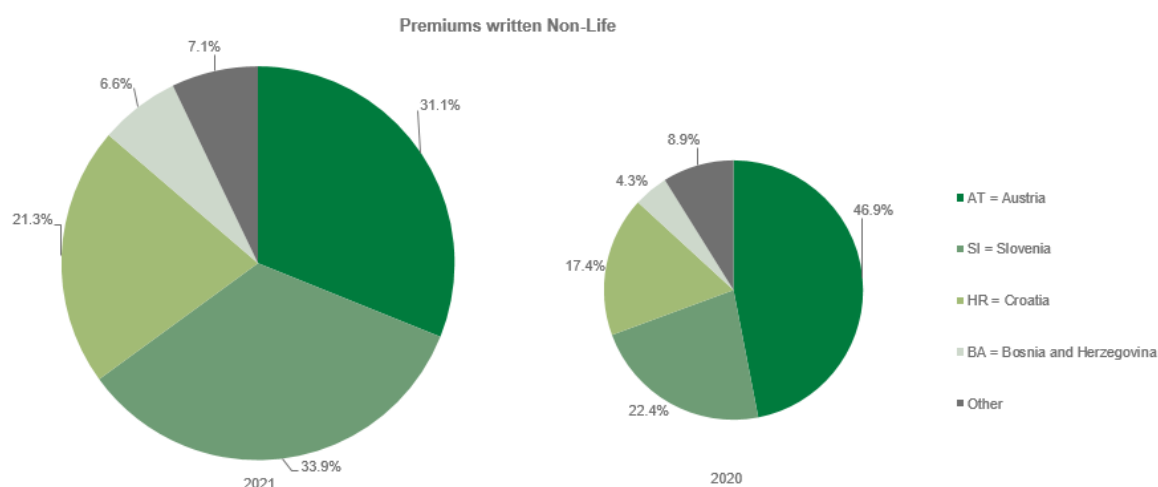
	Claims incurred		Operating expenses	
	2021	2020	2021	2020
<b>Gross amount</b>	kEUR	kEUR	kEUR	kEUR
Non-life reinsurance	3,394	5,059	3,693	4,833
Life reinsurance	1,692	1,207	1,014	1,370
<b>Total</b>	<b>5,086</b>	<b>6,266</b>	<b>4,707</b>	<b>6,203</b>

### A.2.1 Non-life reinsurance

The following table shows the premiums written and the earned premiums in the non-life reinsurance in 2021 according to the material lines of business from the IFRS annual financial statements.

	Premiums written		Earned premiums	
	2021	2020	2021	2020
<b>Gross amount</b>	kEUR	kEUR	kEUR	kEUR
Income protection reinsurance	2,327	3,642	2,331	3,657
Fire and other damage to property reinsurance	3,833	5,121	3,744	5,054
General liability reinsurance	1,297	1,969	1,289	1,951
<b>Total</b>	<b>7,457</b>	<b>10,732</b>	<b>7,364</b>	<b>10,663</b>

GRAWE RE has long-lasting relationships with clients. The chart below gives a breakdown of the premiums written of the non-life reinsurance according to geographical regions, which remained stable compared to last year.



The following table gives an overview of claims incurred and operating expenses of non-life reinsurance:

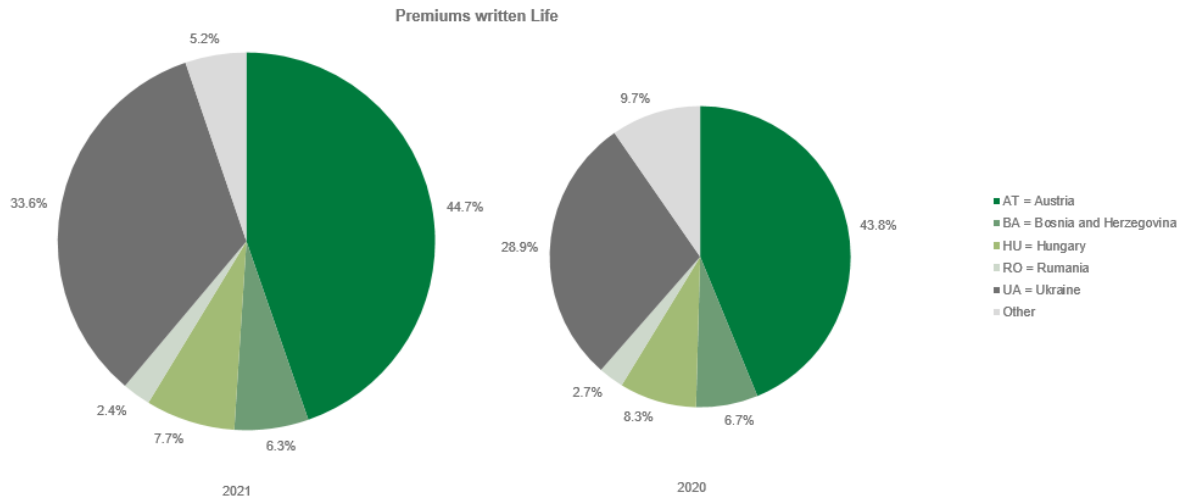
	Claims incurred		Operating expenses	
	2021	2020	2021	2020
<b>Gross amount</b>	kEUR	kEUR	kEUR	kEUR
Income protection reinsurance	985	1,518	1,159	1,756
Fire and other damage to property reinsurance	1,980	2,825	1,842	2,124
General liability reinsurance	430	716	692	953
<b>Total</b>	<b>3,395</b>	<b>5,059</b>	<b>3,693</b>	<b>4,833</b>

## A.2.2 Life reinsurance

The following table shows the gross premiums written and earned premiums of life reinsurance:

	Premiums written		Earned premiums	
	2021	2020	2021	2020
<b>Gross amount</b>	kEUR	kEUR	kEUR	kEUR
<b>Life reinsurance</b>	<b>7,242</b>	<b>6,699</b>	<b>7,065</b>	<b>6,761</b>

The following chart provides an overview of the composition of the premiums written in life reinsurance as of 31 December 2021, broken down according to geographical regions. It also shows that the distribution of the business is very stable.

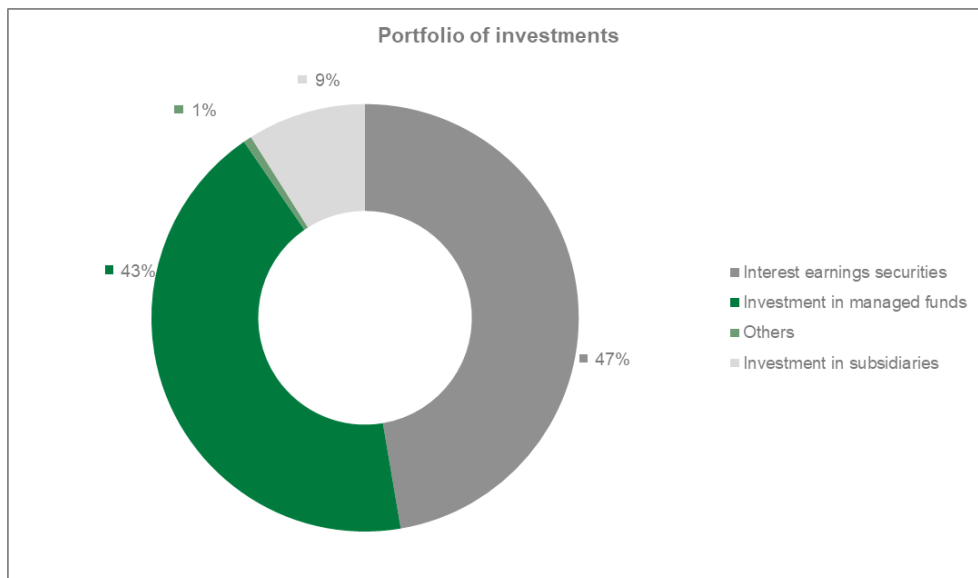


## A.3 Investment performance

### A.3.1 Structure of the investments

In the individual annual financial statements according to IFRS that are set in accordance to Article 2 of the Cyprus Company Law chapter 113, the investments (incl. liquid funds) in the non-life insurance amounted as of 31 December 2021 to kEUR 91,028 (2020: kEUR 86,682). In life insurance, the investments amounted to kEUR 51,855 (2020: kEUR 55,299).

The total portfolio of the investments at book values according to IFRS/CCL (incl. cash at bank and in hand) is comprised as follows as of 31 December 2021:



The investments as of the reference date 31 December 2021 do not include any investments in securitisations.

With regard to the transfer of the book values in the annual financial statements according to IFRS/CCL at the market values in the economic balance sheet, reference is made to section D.

### A.3.2 Result of the investment

The net total income incorporates current income from investments, realised profits and losses as well as depreciations from the following investment groups:

Result of the investments	Investment Income and realised Profits		Depreciations and realised Losses		Amortisations		Net Total Income	
	2021 kEUR	2020 kEUR	2021 kEUR	2020 kEUR	2021 kEUR	2020 kEUR	2021 kEUR	2020 kEUR
Available for sale financial assets securities	1,479	1,603	0	0	-11	-10	1,468	1,593
Available for sale financial assets managed funds	804	691	0	0	0	0	804	691
Investments held at FVTPL(Fair Value Through Profit Loss)	491	12	0	0	0	0	491	12
Investments in other equity securities	11	0	0	0	0	0	11	0
Investments in subsidiaries	7,505	5,705	0	0	0	0	7,505	5,705
Loans and receivables including bank balances	0	7	0	0	0	0	0	7
<b>Total result of the investments</b>	<b>10,290</b>	<b>8,018</b>	<b>0</b>	<b>0</b>	<b>-11</b>	<b>-10</b>	<b>10,279</b>	<b>8,008</b>

The investment income is higher from the previous year mainly due to an Increase of income from investment in subsidiaries coming from the higher dividend paid by Medlife Insurance Ltd. to GRAWE RE during the year as shown above. In addition to the above there was also a slight increase from the dividend income from funds by kEUR 113 each and from less interest received from coupons by kEUR 125. In addition, we had an increase in the value of Bonds held at FVTPL by kEUR 479.

In the reporting year, the annual financial statements drawn up pursuant to the provisions of the IFRS/CCL include profits or losses that were recognised directly in equity as per the below table.

Income for the year	2021 kEUR	2020 kEUR
<b>Profit for the year</b>	<b>12,508</b>	<b>10,639</b>
Other comprehensive income:		
<i>Items that may be reclassified subsequently to the Income Statement:</i>		
<i>Available-for-sale financial assets</i>		
Net fair value gain/loss on available-for-sale financial assets during the year	-295	2,687
Net gain transferred to the income statement on sale of available-for sale financial assets	-294	-52
Other comprehensive income for the year, net of tax	-589	2,635
<b>Total comprehensive income for the year</b>	<b>11,919</b>	<b>13,275</b>

## **A.4 Performance of other activities**

All material income and expenses were explained in the previous sections. In addition, there are no other material income and expenses that need to be listed in the reporting year 2021.

## **A.5 Any other information**

Any relevant information regarding business and results are incorporated in the previous sections.

## **B. SYSTEM OF GOVERNANCE**

### **B.1 General information on the system of governance**

#### **B.1.1 Appropriateness**

The system of governance of GRAWE RE guarantees a solid and prudent company management and is appropriate to the nature, scope and complexity of the business. The appropriateness and effectiveness of the internal control systems and of the other components of the system of governance are regularly checked by the Internal Audit department.

#### **B.1.2 Board of Directors and key functions**

##### **B.1.2.1 Board of Directors**

The management of the company is the responsibility of the Board of Directors which consists of five Board members (3 executive Board members and 2 non-executive Board members). The company is represented jointly by two members of the Board of Directors.

The allocation of responsibilities within the Board of Directors is defined in the rules of procedures of the company in which also the company management measures are listed that require the prior approval of the shareholder.

As of 31 December 2021, the Board of Directors of GRAWE RE consisted of:

- Dr. Wolfgang Felser (Chairman, non-executive Board member)
- Daniela Uhlmann, MA (executive Board member)
- Aristodemos Aristodemou, BA, FCCA (executive Board member)
- Dr. Thomas Hlatky (executive Board member)
- Petros Petrides, BSC FCA (non-executive Board member)

As of 1 February 2022, the Board of Directors of GRAWE RE appointed Mr. Christos Michael, MA FCCA as a non-executive Board member.

Mr. Felser is responsible for the areas law and HR. Additionally, in his role as Chairman he is also supervising the other members of the Board of Directors.

The responsibilities of Mr. Aristodemou are the areas of accounting, finance and asset management.

Mrs. Uhlmann is responsible for the areas risk management, IT services, marketing, internal reporting and controlling and project management.

The responsibilities of Mr. Hlatky are the areas of life and non-life reinsurance, claims and sales.

Mr. Petrides and Mr. Michael form the Audit Committee and are additionally responsible for supervising the Board of Directors.

Each member of the Board of Directors has to present the important issues of the areas of responsibility at the Board meetings to make them subject of joint consultation and decision-making. On demand of a Board member, important matters of another area of responsibility shall be dealt with in the overall Board; especially the Chairman can submit questions of any area of responsibility submitted to the Board for resolution.

### **B.1.2.2 Key functions (Governance functions)**

In addition to the Board of Directors, the four Governance functions, namely the Risk Management function, Compliance function, Internal Audit function and Actuarial function are set up at GRAWE RE as "key functions".

#### **B.1.2.2.1 Risk Management function**

The Risk Management function draws up and defines the risk strategy and determines risk limits. The Risk Management function analyses risk-relevant data, aggregates risks and highlights risk concentrations. In addition, the Risk Management function prepares a report that gives an overview of the company's overall risk situation (ORSA) and updates the existing risk management policies at least annually.

#### **B.1.2.2.2 Compliance function**

The Compliance function monitors compliance with the external and internal requirements and advises the Board of Directors in particular with regard to compliance with the regulations valid for operating the business. It assesses the compliance risk and the possible effects of changes to the legal environment to the business of GRAWE RE. It also assesses the appropriateness of the in-house measures at the company to comply with the requirements.

#### **B.1.2.2.3 Internal Audit function**

The Internal Audit function provides independent and objective auditing and advising services. For this purpose, it draws up an annual audit plan on the basis of a risk-weighted audit land map that is to be approved by the Board of Directors.

Based on a risk-based audit approach, the Internal Audit department carries out ongoing and comprehensive audits of the legality, correctness and expediency of the entire business operations and audits of the appropriateness and effectiveness of the in-house control systems and of the other components of the system of governance.

#### **B.1.2.2.4 Actuarial function**

The Actuarial function carries out coordination, control and consulting tasks. It coordinates the necessary steps to calculate the technical provisions pursuant to the Solvency II regulations and controls the calculation process. In addition, it expresses and explains any concerns with regard to the appropriateness of the technical provisions.

The Actuarial function assesses the sufficiency and the quality of the data that are taken as basis for the calculation of the technical provisions and compares the Best Estimate values with the empirical values.

It provides assistance in the implementation of the risk management system, in particular regarding own risk and solvency assessment.

### **B.1.3 Material changes in the system of governance**

There were no material changes to the system of governance in the reporting period.

### **B.1.4 Compensation policy and compensation practices**

#### **B.1.4.1 Principles of the compensation policy and importance of fixed and variable compensation components**

The principles of the compensation policy are aligned to the corporate strategy, the mission statement of the Group, the goals and values as well as the long-term interests and the permanent performance of GRAWE RE and include measures to avoid conflicts of interest. The compensation policy is in line with the business and risk management strategy of GRAWE RE and its risk profile.

The compensation practices are reconcilable with a solid and effective risk management, conducive to it and do not encourage the taking of risks that exceed the risk tolerance thresholds of GRAWE RE. Within the overall compensation, the ratio between fixed and variable components is appropriate, whereat on the one hand the fixed compensation is high enough that an absolute economic dependence of the employee on the receipt of the variable component is avoided, and on the other hand, a flexible policy with respect to the variable compensation components is possible without restriction and thus, also the granting of a variable compensation can be renounced completely.

The variable compensation of the employees working in the Governance functions (Risk Management, Compliance, Internal Audit and Actuarial function) – if there is any - depends, in any case, on the success of the company and is independent of direct performance of the operative units and areas for which they are responsible for.

If employees which have a significant impact on the risk profile of GRAWE RE receive a variable compensation amounting to more than 30% of the annual basis compensation (below that level it is not expected that a significant financial incentive which encourages the taking of excessive risks exists), a retention of an adequate percentage of the variable compensation over 3 years will be applicable.

Employees with a significant impact on the risk profile of GRAWE RE are the members of the Board respectively the Heads of the key functions.

The payment of variable compensation components, with the exception of any variable compensation components to be accrued is made entirely in the form of monetary payments.



Voluntary severance/settlement payments are granted only on an exceptional basis and if, only in accordance with the work performed during the overall period of activity.

Persons subject to this compensation policy are not allowed to follow personal hedging strategies and to make use of compensations-related and liability-related (re-)insurances, which, if applicable, undermine the risk adaptation effects enshrined in the compensation regulations.

#### **B.1.4.2 Individual and collective performance criteria**

At GRAWE RE, the variable compensation components are linked to individual and collective performance criteria.

##### **B.1.4.2.1 Employees without management or earnings responsibility**

The so-called "bonus" is a variable compensation component that can be granted for extraordinary performances (e.g. successful project completion) and is paid out as lump sum amount to the employees.

##### **B.1.4.2.2 Executives (including Board of Directors)**

Executives can get a variable compensation in form of an annual bonus. The amount of the variable compensation is by contract limited and may not exceed 30% of the annual fixed salary. The performance-related compensation components primarily depend on the earnings and financial position of GRAWE RE and are particularly focused on strengthening the own funds situation and the sustainable safeguarding of the competitiveness.

##### **B.1.4.3 Supplementary pension or early retirement schemes**

There is currently no supplementary pension or early retirement schemes for members of the Board of Directors.

#### **B.1.5 Material transactions**

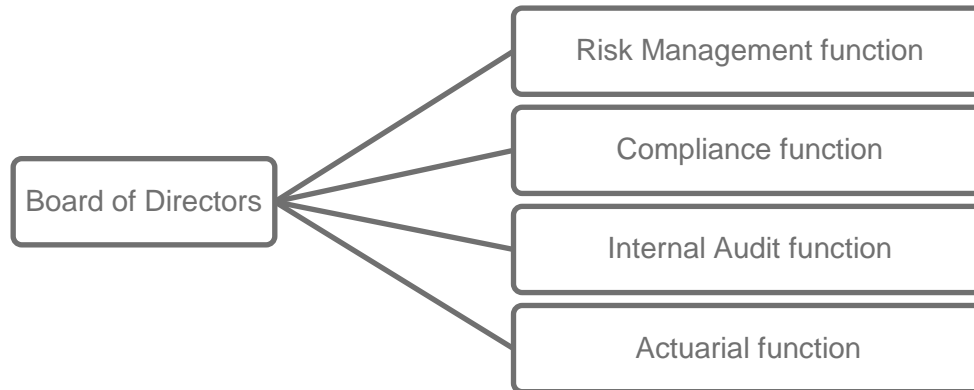
In the reporting period, there were no material transactions between GRAWE RE and its shareholders, persons who exercise a significant influence over the company, or members of the Board of Directors.

#### **B.1.6 Governance structure**

At GRAWE RE, Governance functions have been set up. Due to the limited size of the company a Governance Committee will be established in the future only if required by law or due to the size of the company.

### **B.1.6.1 Organisational integration**

In the following, the integration of the system of governance in the business organisation of GRAWE RE is depicted in graphical form:



### **B.1.6.2 Authorisations, resources and operational independence**

The Heads of the Governance functions have the authorisations and resources required to carry out their respective function. They are appropriate to the nature, scope and complexity of the business of GRAWE RE.

The Heads of the Compliance function, Internal Audit function and Actuarial function are professionally independent and report directly to the Board of Directors. The Risk management function is carried out due to the limited size of the company from a Board member. Conflicts of interest are nevertheless not considered to be relevant as all important decisions are always taken on the level of the overall Board of Directors. For the Actuarial function and Internal Audit function personnel leasing agreements exist with Grazer Wechselseitige Versicherung AG.

All Heads of the Governance functions can only be appointed, re-appointed or dismissed by the overall Board of Directors.

### **B.1.6.3 Reporting and advising**

#### **B.1.6.3.1 Risk Management function**

The reporting differentiates between the standard reporting at defined dates (annually or quarterly) and the ad-hoc reporting.

The standard reporting by the Risk Management function is divided into the risk assessment for the following year carried out once a year as part of the planning process of GRAWE RE (risk assessment) and the quarterly reporting of the risks occurred in the accounting year (risk reporting). The reports are made by the persons responsible for the risk (Risk Owners) to the risk management. The risk management creates risk reports that are (if material risk occurred) communicated to the Board of Directors.

In addition to the standard reporting, there is also a so-called ad-hoc reporting.

Furthermore, an ORSA report is created at least once a year by order of the Board of Directors and communicated to the Board of Directors for approval. The recipients of the report are, in addition to the Board of Directors, the Governance functions and the supervisory authority (SI).

The Risk Management function advises the Board of Directors on risk-relevant issues and proposes corresponding measures and cross-departmental measures to limit risks and their monitoring.

#### **B.1.6.3.2 Compliance function**

The reporting obligations of the Compliance function are the responsibility of the Compliance Officer as well as the compliance contact persons and incorporate the regular reporting and the ad-hoc reporting. The Compliance Officer sends a written report (Compliance annual report) to the Board of Directors once a year. In addition, the Compliance Officer reports to the Board of Directors immediately on important compliance issues (ad-hoc Compliance Report).

The reporting by the Compliance contact persons is done in the course of the risk management process. In addition, the Compliance contact persons report to the Compliance Officer on a quarterly basis on the compliance risks, compliance measures and the other compliance topics that relate to their area of responsibility. The results are incorporated into the annual report of the Compliance Officer. Important compliance topics are to be reported to the Compliance Officer immediately.

The Compliance function advises the Board of Directors in particular with regard to compliance with the regulations valid for the operation of the business and with regard to the implementation of compliance measures.

#### **B.1.6.3.3 Internal Audit function**

Promptly after completion of an audit, the internal audit function creates an audit report on the results of its audit activities. The reports are to be communicated to the overall Board of Directors. The approved audit reports will be distributed to the managers of the audited or affected divisions/departments.

Irrespective of these reports, the Internal Audit function has the obligation to inform the Board of Directors immediately, whenever the continuity, development or the viability of the company may be vulnerable or affected significantly. An immediate reporting is also mandatory, whenever a recorded interference with extensile dimensions must be corrected in time or its extension must be limited.

In the context of consultancy services, the Internal Audit function provides support for projects (in particular consulting regarding the design of internal control systems and implementation of projects) and work flows, in particular in respect of IT-support, in order to ensure compliance and to achieve the implementation of adequate controls.

#### **B.1.6.3.4 Actuarial function**

The Actuarial function draws up a written report to the Board of Directors and the supervisory authority once a year. The report documents the tasks carried out by the Actuarial function as well as the generated results and defines any defects clearly and unambiguously and contains recommendations on the elimination of such defects.

According to the LAW the tasks of the Actuarial function are as follows:

- Coordinate the calculation of technical provisions.
- Ensure the appropriateness of the methodologies and underlying models used as well as the assumptions made in the calculation of technical provisions.
- Assess the sufficiency and quality of the data used in the calculation of technical provisions.
- Compare Best Estimates against experience.
- Inform the administrative, management or supervisory body of the reliability and adequacy of the calculation of technical provisions.
- Oversee the calculation of technical provisions in the cases set out in section 88.
- Express an opinion on the overall underwriting policy.
- Express an opinion on the adequacy of reinsurance arrangements.
- Contribute to the effective implementation of the risk-management system referred to in section 45, in particular with respect to the risk modelling underlying the calculation of the capital requirements set out in the Sixth Chapter, Sections 4 and 5 of this Part, and to the assessment referred to in section 46.

The Actuarial function submits information about the calculation of the technical provisions to the Board of Directors. These contain an analysis of the reliability and appropriateness of the calculation and of the uncertainty that the estimate of the technical provisions contains.

## **B.2 Fit and proper requirements**

### **B.2.1 Requirements of skills, know-how and expertise**

#### **B.2.1.1 General**

With regard to the qualification of members of the Board of Directors and key function holders, the knowledge acquired through theoretical training and practical experience has to be taken into account. Within the Board of Directors, the allocation of responsibilities is fundamental.

Regarding key function holders, it has to be taken into account that their requirements are to be applied also to the deputies of the functions (if existent) accordingly proportional to the duration of the representation as well as the nature, extent and complexity of the business activity.

## **B.2.1.2 Board of Directors**

### **B.2.1.2.1 Training and professional experience**

Requirements for the professional qualification of Board members: Graduation from relevant professional degree programs/courses and/or external or internal trainings or corresponding education and further training.

At least two board members shall have adequate professional experience as a leader or expert; experience shall be assumed if a managing position for at least ten years at GRAWE Group or an insurance or reinsurance undertaking of comparable size and type of business is certified. For further members, experience in other areas which are essential for running the (re-)insurance business and a leading position in corresponding companies are sufficient.

### **B.2.1.2.2 Know-How**

Members of the Board of Directors must have know-how in the areas of (re-)insurance and financial markets, business strategy and business model, system of governance, financial analysis (accounting) and actuarial analysis as well as supervisory law and regulatory requirements.

In this context the Board of Directors must be considered in its entirety as adequately fit. Individual members with pronounced specialist know-how can compensate – particularly with regard to the allocation of responsibilities - less pronounced know-how of other members in these areas.

## **B.2.1.3 Key function holders**

### **B.2.1.3.1 Training and professional experience**

The holders of key functions have training specific to their field or sufficient professional experience. A specialist qualification sufficient for the respective area of responsibility in the areas relevant for insurance and reinsurance companies is usually at any rate to be assumed if a relevant degree has been completed and evidence is provided of at least three years of relevant professional experience.

If these requirements are not met, it is to be checked in individual cases whether the respective person has sufficient theoretical and practical knowledge. In this case, a different relevant training can be seen as sufficient instead of a relevant degree course.

### **B.2.1.3.2 Know-How**

Detailed knowledge is required for the Heads of a Governance function. This includes know-how in the area of (re-)insurance and financial markets, business strategy and business model and the knowledge of the general regulatory conditions according to the respective function.

The Head of the Risk Management function, the Head of the Compliance function and the Head of Internal Audit function must have know-how in the area of the system of governance.

The Head of the Risk Management function and the Head of the Actuarial function have to have knowledge in the areas of financial analysis (accounting) and actuarial analysis (the risk management only to a limited extent). In addition, the Head of the Actuarial function has the necessary know-how of insurance mathematics and financial mathematics that is appropriate to the nature, scope and complexity of the risks associated with the business of GRAWE RE as well as relevant experience with regard to applicable professional and other standards.

## **B.2.2 Procedures for the fit and proper evaluation**

### **B.2.2.1 Board of Directors**

The overall Board of Directors is responsible for the fit and proper evaluation of members of the Board of Directors. The responsible Board member for HR can be entrusted with operational tasks such as the obtaining, forwarding and preparation of documents.

The aptitude assessment for new members of the Board of Directors has to be done before they are appointed, so that the overall Board of Directors can take the result of the aptitude assessment as basis for their decision. For the aptitude assessment a detailed CV, qualification certificates (highest qualification) and/or references for relevant professional experience (duration and content) and an actual criminal record certificate have to be submitted.

Before the appointment, a hearing can take place during which the members of the Board have the opportunity to also ask verbal questions to the candidate. The notification to the SI is to be made latest immediately after the new Board member has been appointed (but if possible already one month before the appointment).

### **B.2.2.2 Key function holders**

The final decision regarding the appointment of key function holders is taken by the Board of Directors whereas the Board member responsible for HR can refer to other resources and/or departments (e.g. Internal Audit) to assess the specialist aptitude.

The documents and the results of the aptitude assessments will be documented/filed by the Board member responsible for HR.

All potential new employees undergo a multi-stage and structured application procedure, which includes besides psychometric, qualification-diagnostic potential analysis instruments also semi-structured interviews or aspects of assessment procedures.

The aptitude assessment for new key function holders is done in the course of an internal or external recruiting process. For the aptitude assessment a detailed CV, a structured HR questionnaire, qualification certificates (highest qualification) and/or references for relevant professional experience (duration and content) and an actual criminal record certificate have to be submitted.

The notification to the SI is to be made immediately after the appointment of the key function holder.

## **B.3 Risk management system**

Risk management refers to all measures regarding the identification and management of risks that GRAWE RE is exposed to and therefore all harmonized and coordinated regulations, measures and procedures for the identification, monitoring and averting risks.

The task of the risk management is not to prevent risks, but to enter into risks in a conscious and goal-oriented manner and to systematically assess, control and monitor these undertaken risks and to prepare alternative measures in order to promptly counteract any threatening developments.

One goal of risk management is to create a company-wide risk culture, i.e. risk awareness in all decisions and actions in the business procedure.

Awareness of risks at all levels of the company is therefore necessary and involves basically all employees. A corresponding information and training is already implemented for new and existing employees within the framework of basic training of GRAWE RE.

### **B.3.1 Risk strategy**

The following risk-related principles of GRAWE RE can be derived based on the business principles explained in section A.1.1:

1. Safeguarding the continuance and sustainable prosperity of the company
2. Safeguarding the financial objectives
3. Achievement of the strategic objectives
4. Compliance with the legal provisions
5. Customer oriented service

The sustainable equipment with own funds and its safeguarding are key factors for ensuring the continuance of the company.

The harmonization of the business strategy and the risk strategy takes place in the course of the annual planning as well as regularly through the calculation of key figures and own funds and according to the Solvency II standard formula.

Furthermore, conclusions with regard to the equipment of own funds are drawn based on the multi-year-planning within the ORSA process, and with scenario analysis it is analysed if the required minimum capital requirement is also ensured for the company in an adverse market environment.

The risk management and the internal control systems of GRAWE RE are aligned with the strategy of the company and thus ensure that both the financial and the strategic objectives are achieved as well as the statutory solvency requirements are fulfilled. These goals can be achieved through mature and functional internal control and risk management systems that are according to the Group standard.

### **B.3.2 Risk management process**

The individual steps of the risk management process can be seen in the following chart.



The first step in the risk management process is the **risk identification**. It involves an analysis of the current situation of the risk management by scrutinising critical areas of the company as well as processes and by identifying risks in core processes and finding corresponding measures to mitigate or prevent risks.

The main focus here is predominantly on the risks with the potentially greatest financial effects.

At first the identified risks are classified into risk categories and into underlying individual risks. The categorisation simplifies the reconciliation and analysis of the risks as well as their steering.

During the initial identification of the risks of GRAWE RE, clear responsibilities for the risks were defined; whereby the assigned risk owners are responsible for the evaluation and the steering of these risks.

To assess the overall risk profile, a time horizon of one year and beyond that a 3-year risk perspective pursuant to the planning horizon of GRAWE RE is used.

In order to standardise the identification and evaluation of the risks within the individual departments of GRAWE RE, guidelines for the evaluation of potential risks and those that have already occurred will be provided besides a uniform risk list.

The second step in the risk management cycle is the **risk assessment and analysis**. As far as possible, the identified risks are quantified. Qualitative assessments are used for risks that cannot be quantified or are difficult to quantify (such as in the area of operational risks).

The assessment of the potential risks is carried out in the form of expert estimations by using risk evaluation matrices based on risk level and probability of occurrence (=risk assessment).

The selection of the risk level and the probability of occurrence results in the expected value of a risk per year. The standard risk assessment of the potential risks is implemented once a year as part of the planning process (third quarter).



In addition, in the risk analysis the materiality of the identified risks is defined and a risk ranking is carried out. In further analyses and in the determination of suitable risk steering measures, it will be especially focused on the material risks of GRAWE RE.

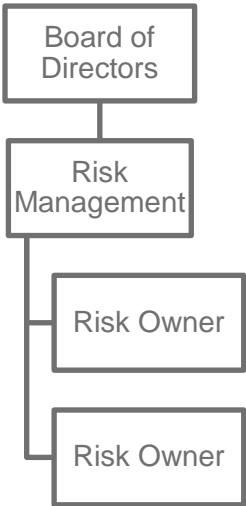
After the risk evaluation and analysis, the **risk steering** follows. During the risk steering, the risk profile, the internal overall solvency needs and the internal defined risk limits will be merged. It is to be ensured that the material risks are subsequently covered with corresponding capital resources. This is ensured by transferring risk-relevant information into corresponding measures (such as a withdrawal from certain business fields or the adaptation of products or in the investment). In doing so the principle of economic efficiency is taken into account.

As part of the **risk reporting** a standard reporting on set dates (i.e. annual, quarterly) or an ad hoc reporting can take place. Thereby, risks that have occurred and also have been reported within the risk assessment are reported within the standard reporting. In case of a significant change of the risk situation ad hoc reports are used.

Another step in the risk management process is the **risk monitoring**. The risk monitoring of the identified risks is the responsibility of the defined risk owners and is done on one hand by checking the compliance of risk limits and on the other hand by continuously monitoring the risk indicators. In addition, the effectiveness of the implemented risk-limiting measures and the development of the (re-)insurance and capital market are monitored in order to react as quickly as possible to changes.

### B.3.3 Implementation of the Risk Management function

The Risk Management function is implemented organisationally as follows:



The Risk Management function is because of the fact that it is done by a Board member well integrated into the organisational structure and in the decision-making processes of GRAWE RE and is sufficiently independent in pursuing of its activity.

The Risk Management function reports directly to the overall Board of Directors and can only be appointed, re-appointed or dismissed by Board of Directors. For details on the Risk Management function, it is referred to section B.1.

The overall Board of Directors is responsible for the implementation of an appropriate risk management system.

The responsibilities in the risk management process are regulated as follows:

The evaluation, steering and monitoring of the individual risks are done by the **Risk Owners**. The identification and evaluation of the risks in connection with reserving is the responsibility of the **Actuarial function**. The latter also audits the appropriateness of the methods used.

As already stated in B.1.2.2, the risks related to compliance are identified and assessed by the **Compliance function**.

The **Internal Audit** creates a risk-oriented audit planning and assesses the effectiveness of the risk management system during its audits.

The **responsible Board member for HR** department implements the compensation policy that, among others together with the risk strategy serves the goal of guaranteeing a prudent management of the company and strengthening the effectiveness of the risk management.

The **Risk Management** is responsible for the coordination and the support of the risk owners and the merging of the results in order to determine the overall risk profile of GRAWE RE.

With regard to the main tasks and responsibilities of the Risk Management function, it is referred to section B.1.2.2.1. The authorisations, resources and operational independence are described in section B.1.6.2.

The reporting lines start on the one hand from the Risk Owners to the Risk Management and on the other hand from the Risk Management function to the overall Board of Directors. The reporting and advising by the Risk Management function are depicted in section B.1.6.3.1

### **B.3.4 Risk management for users of Internal Models**

For the calculation of the solvency capital requirement according to Solvency II (Pillar 1), GRAWE RE only uses the standard formula.

### **B.3.5 Own risk and solvency assessment**

The main goal of the own risk and solvency assessment (in brief ORSA) is the depiction of the real risk and solvency situation of the company according to the solvency requirements (Solvency II), whereby both the strategic, financial and technical goals of the business strategy and the risk limits of the risk strategy are taken into account.

Therefore, any material risk of GRAWE RE is taken into account, no matter if they can be quantified or not.

The ORSA links the risk management system with the company control and forms a linkage between the areas capital requirement, supervision and internal control as well as disclosure. This is done in compliance with the business strategy, taking into account the risk and capital management strategy. In the process, a forward-looking, future-oriented perspective is also taken into account in order to be able to include potential future risks in the overall risk analysis.

In the course of the review of the risk-bearing capacity, the internal solvency ratio is determined by comparing the overall solvency needs (= internal solvency capital requirement) and available own funds.

The ORSA is a fundamental control instrument for the Board of Directors and a central source of information for the other key functions of GRAWE RE as well as for the SI.

The ORSA process is configured taking into account the nature, scope and complexity of the risks of GRAWE RE.

In addition, there is a comparison between the results of the calculation of the solvency capital requirements according to Solvency II (SCR of Pillar 1) and the results of the calculation from the company-internal view as well as an assessment of a continuous compliance of the SCR and MCR and an assessment whether the requirements of the calculations of technical provisions are satisfying.

### **B.3.5.1 Description of the ORSA process**

The ORSA process of GRAWE RE starts with the definition of the risk strategy. This must be done in accordance with the business strategy. In addition, the risk limits and the risk appetite are defined and already available limits are reviewed.

Within the calculation of the risk-bearing capacity, the overall solvency need is compared with the available own funds according to Pillar 1. The own funds are classified according to their quality into the so-called tier categories 1 to 3, whereby GRAWE RE only has own funds of the highest quality (therefore Tier 1). This results into an internal solvency ratio for a year.

The future perspective matters fundamentally in the ORSA process. The results of multi-year perspective are summarised in the ORSA report. However, the results influence the business and risk strategy and can, if applicable, result in an adjustment of the business and risk strategy.

Another part of the ORSA report considers the review of the appropriateness of the SCR calculations and/or SCR assumptions. This is also done in the course of the ORSA process by comparing results of Pillar 1 and Pillar 2. In addition, the compliance with regulations regarding technical provisions is checked in the course of the ORSA process and explained in the ORSA report.

The underlying assumptions for the ORSA risk evaluations and risk calculations as well as the results and findings from the ORSA process and from the SCR calculation are summarised in the ORSA report and discussed within various management bodies of GRAWE RE and approved by the Board of Directors.

These assumptions, results and findings are incorporated into management decisions and can result into adjustments of the business and risk strategy. After adoption of the ORSA report by the Board of Directors, this report is sent to the SI within two weeks.

A key point of the ORSA process - particularly when determining the overall solvency needs - is the assurance of the data quality. In GRAWE RE, this is ensured through uniform systems within GRAWE Group by using automatic or largely automatic interfaces, exact definitions of

the individual data and audit-proof of the data but also by having close collaboration between the Governance functions and any other areas affected by the ORSA process.

### **B.3.5.2 Organisational structure and decision-making processes in the ORSA**

The overall responsibility for an effective ORSA process lies within the overall Board of Directors. There is an ongoing reporting to the Board of Directors, assumptions about the planning figures for the business planning requirements for pillar 2 are discussed/agreed with them. This means that the Board of Directors has to be able to relate to the assumptions of the ORSA calculations, to scrutinise the results and consequently to derive management decisions. These in turn are incorporated into the ORSA process as a new basis.

In addition, the Board of Directors can decide to conduct an ad-hoc ORSA in the case of a significant change of the risk situation or the risk profile.

The Risk Management function coordinates and implements the ORSA process. With regard to the organisational structure and decision-making processes of the Risk Management function, reference is made to the section B.3.3.

### **B.3.5.3 Frequency of the ORSA**

As a standard procedure, the ORSA process is carried out once a year, taking into account the planning cycle of GRAWE RE. The ORSA report is approved by the Board of Directors. The findings from the ORSA report are incorporated in turn into the business and risk strategy and in the decisions by the Board of Directors.

If significant changes result in the risk profile and/or in the available own funds of GRAWE RE, an ad-hoc ORSA (=not a regular ORSA) will be launched directly. Such changes can be triggered by internal decisions and factors (such as a fundamental change in the investment policy, the commencement or termination of a fundamental business field or the purchase or sale of a fundamental strategic investment) or also by external factors.

### **B.3.5.4 Determination of the overall solvency needs**

The risk profile of GRAWE RE is derived from the risk evaluations of the risk assessment in the risk management process (cf. section B.3.2). In addition, the results of the SCR calculations according to the standard formula are analysed.

For the determination of the internal overall solvency needs, own internal methods are developed on the basis of "Value at Risk" calculations with a confidence level of 95% for one year (in brief: "VaR95") for the largest risk positions (from the risk assessment and/or from the SCR calculation) and/or internal stress tests and scenario analyses are carried out.

The largest risk position in GRAWE RE is the market risks and the underwriting risk Life for which therefore "VaR95" calculations have been carried out in GRAWE RE. The remaining risks are predominantly evaluated using expert estimations. It should be noted that all material risks are included in the calculation of the overall solvency need, including those that are not taken into account in the standard formula. In addition, risks that are not adequately depicted

in the standard formula such as the risk-free assessment of OECD government bonds are replaced with an evaluation in line with risk.

The overall solvency needs from the company-internal risk view result from the aggregation of the material risks determined. The risks are aggregated in the ORSA process, taking into account the correlation matrices of the standard formula of Pillar 1.

The projection of the overall solvency needs GRAWE RE is done based on the existing 3-year planning in the form of IFRS planning and represents a market value planning.

### **B.3.5.5 Interaction between capital management and risk management**

As already explained in section B.3.5.1, in the calculation of the risk-bearing capacity, the overall solvency needs determined are compared with the available own funds as of the defined reference date. In addition to the quantity of the own funds, their quality and volatility (Tiering) are also relevant.

GRAWE RE only has own funds of the best tier category (Tier 1). Also the goal of GRAWE RE is to only have Tier 1 equity in the future.

In addition, it is ensured that there are realistic plans in increasing of own funds. This is done through a mid-term capital management plan that is set up annually, including forecast for the own funds and capital requirements. In the capital management plans the information from the risk management system and the ORSA report are to be taken into account. In addition, there is a detailed annual plan for the following year that includes the eligible own funds and the own funds requirement. This detailed plan is submitted to the overall Board of Directors along with the ORSA report.

If the forecasts reveal that the solvency ratio of GRAWE RE threatens to fall below the internally defined threshold, a corresponding corporate action plan has to be developed.

## **B.4 Internal control system**

### **B.4.1 Description**

The overall Board of Directors is responsible for setting up, monitoring and adapting an appropriate and effective internal control system on an ongoing basis that guarantees compliance with the valid legal and administrative regulations of GRAWE RE, the effectiveness and efficiency of the business activities with regard to the company goals and the availability and reliability of financial and non-financial information.

The internal control system is based on the "three lines of defence" concept.

The first line of defence is formed by the risk owners (asset management, underwriting, claims handling, IT, etc.). They take the immediate operational decisions to control risks in order to comply with the set goals and limits. The second line of defence is formed by the Risk Management function, the Compliance function and the Actuarial function. The third line of defence consists of the Internal Audit department that audits and evaluates the effectiveness

and efficiency of the internal control system on an ongoing basis and assists in the further development of effective controls in particular through follow-up audits.

The internal control system incorporates, among others, administrative and accounting procedures, an internal control framework, an appropriate notification and reporting system on all levels of GRAWE RE as well as a Compliance function.

The centralised documentation of the fundamental core processes, including the described checks, the coordination, checks of completeness for the updating and development of the internal control system is the responsibility of the qualified department.

The Risk Management department initiates the process of depicting the core processes and supports the process managers and/or employees in the depiction of the process. Through allocation of the documented activities to specific roles, the responsibility for carrying out the controls is clearly defined.

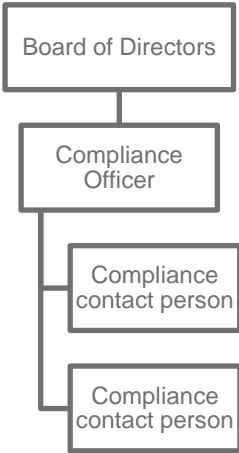
The risks identified in the processes, the corresponding controls, IT systems, roles and documents are managed in uniform "pool models" in order to gain a better overview on the one hand and to standardise terms on the other.

The internal control system of GRAWE RE consists of a large number of controls, where the most important ones are signing regulations, a consistent four eye principle, an adequate separation of functions, a limit setting and internal guidelines.

### B.4.2 Implementation of the Compliance function

The Compliance function is part of the internal control system.

The Compliance function in GRAWE RE is exercised within the framework of a decentralised compliance organisation that can be depicted as follows:



The overall Board of Directors ensures an appropriate organisation of the Compliance function. In this process, it pays attention to the Compliance function being sufficiently resourced and being able to act independently. The overall Board of Directors is responsible for the implementation of the compliance requirements pursuant to Solvency II and decides on compliance-relevant measures and orders.

The Compliance Officer is the responsible Head of the Compliance function. He reports directly to the overall Board of Directors, is independent and free of instruction with regard to his field of expertise. In the event of absence of the Compliance Officer, his tasks and authorisations will be carried out by his deputy.

The Compliance contact persons carry out the Compliance function for their respective corporate area and ensure that all relevant compliance topics are covered.

With regard to the main tasks and responsibilities of the Compliance function, reference is made to section B.1.2.2.2. The authorisations, resources and operational independence are described in section B.1.6.2.

The reporting and advising by the Compliance function are depicted in section B.1.6.3.2.

## **B.5 Internal Audit function**

### **B.5.1 Implementation of the Internal Audit function**

In GRAWE RE, the Internal Audit function has been set up to carry out and to report directly to the overall Board of Directors which ensures an appropriate organisation and set up of the Internal Audit. It decides which measures are to be taken based on the findings by the Internal Audit and ensures that these measures are implemented.

The Head of the Internal Audit has to carry out the tasks of planning, controlling, monitoring and representing externally the Internal Audit. In his absence, he is represented by his deputy.

With regard to the main tasks and responsibilities of the Internal Audit function, reference is made to section B.1.2.2.3. The authorisations, resources and operational independence are described in section B.1.6.2.

The reporting and advising by the Internal Audit are depicted in section B.1.6.3.3.

### **B.5.2 Objectivity and independence**

The Internal Audit carries out its tasks autonomously, independently, objectively, impartially and above all process-independently. The employees of the Internal Audit department only work for the Internal Audit department and are entrusted with no other tasks. They are not subject to instruction from any other department when carrying out the audit, the reporting and the evaluation of the audit results. The Internal Audit is not influenced when determining the scope of the audit, the executing of the order and during the reporting.

The members of the Internal Audit proceed in an impartial and unbiased manner when carrying out their audit work. The prohibition of self-auditing is complied with and conflicts of interest that occur are disclosed.

## **B.6 Actuarial function**

The Actuarial function at GRAWE RE reports directly to the overall Board of Directors and is independent in its subject matter. The Board of Directors ensures an appropriate organisation and set up of the Actuarial function. It decides which recommendations from the Actuarial function are to be complied with to eliminate deficiencies, and ensures that these recommendations are implemented.

In his absence, the Head of the Actuarial function is represented by his deputy.

With regard to the main tasks and responsibilities of the Actuarial function, reference is made to section B.1.2.2.4. The authorisations, resources and operational independence are described in section B.1.6.2.

The reporting and advising by the Actuarial function are depicted in section B.1.6.3.4.

## **B.7 Outsourcing**

### **B.7.1 Outsourcing policy**

Outsourcing within GRAWE RE is defined as follows:

An outsourcing can be a simple outsourcing or an outsourcing of a critical or important operational function or activity (hereinafter also: "critical outsourcing").

A critical or important operational function or activity is a function or activity which GRAWE RE cannot continue its business activity without any material impairment, or perform continuously and satisfactory service to contractual partners or cannot meet material governance requirements.

An outsourcing of a critical or important operational function or activity results in requirements that have to be met additionally to the requirements of a simple outsourcing. The obligations of GRAWE RE regarding outsourcing therefore depend on whether a simple outsourcing or a critical outsourcing exists. At any rate, including intra-group outsourcing, GRAWE RE remains responsible for the fulfilment of all requirements under supervision law.

GRAWE RE does not carry out the outsourcing of a critical or important operational function or activity if this means a material impairment of the quality of its system of governance or an undue increase of the operational risk. Furthermore, such an outsourcing may not jeopardise the monitoring of the compliance with the regulations valid for the operation of the reinsurance by the SI or the permanent and defect-free provision of the service to contractual partners.

Regarding each outsourcing, it is regulated in the corresponding outsourcing contract that the service provider collaborates with the SI with regard to the outsourced task and that GRAWE RE, its auditors for the annual financial statements and the SI have access to the data and the business premises of the service provider with regard to the outsourced task.



### **B.7.2 Outsourcing of critical or important operational functions or activities**

GRAWE RE has outsourced as of 31 December 2021 just two critical or important operational functions or activities, the Asset Management and IT services, to its mother company Grazer Wechselseitige Versicherung AG.

### **B.8 Any other information**

Any important information regarding the governance system is described in the relevant section.

## C. RISK PROFILE

A risk profile is the entirety of all risks that a company is exposed to on a certain reference date, taking into account the business planning horizon. The conditions under which the existence of GRAWE RE could be at risk can be derived from it.

In order to illustrate the risk profile of GRAWE RE, all risks entered into as well as potential risks are recorded individually and on aggregated basis, whereby the implemented risk mitigation techniques and other measures are taken into consideration.

To determine the risk profile, the largest risk positions from the internal risk assessment - cf. sections B.3.2 and B.3.5.1 are analysed and prioritised. In addition, the results from the calculations of the statutory solvency capital requirement (SCR) are analysed.

To limit the risks, GRAWE RE has defined internal risk limits. These are the limits that the company has imposed upon itself when entering risks. The compliance with the limits is on one hand attained by a well-functioning internal control system and on the other hand by efficient risk mitigation techniques.

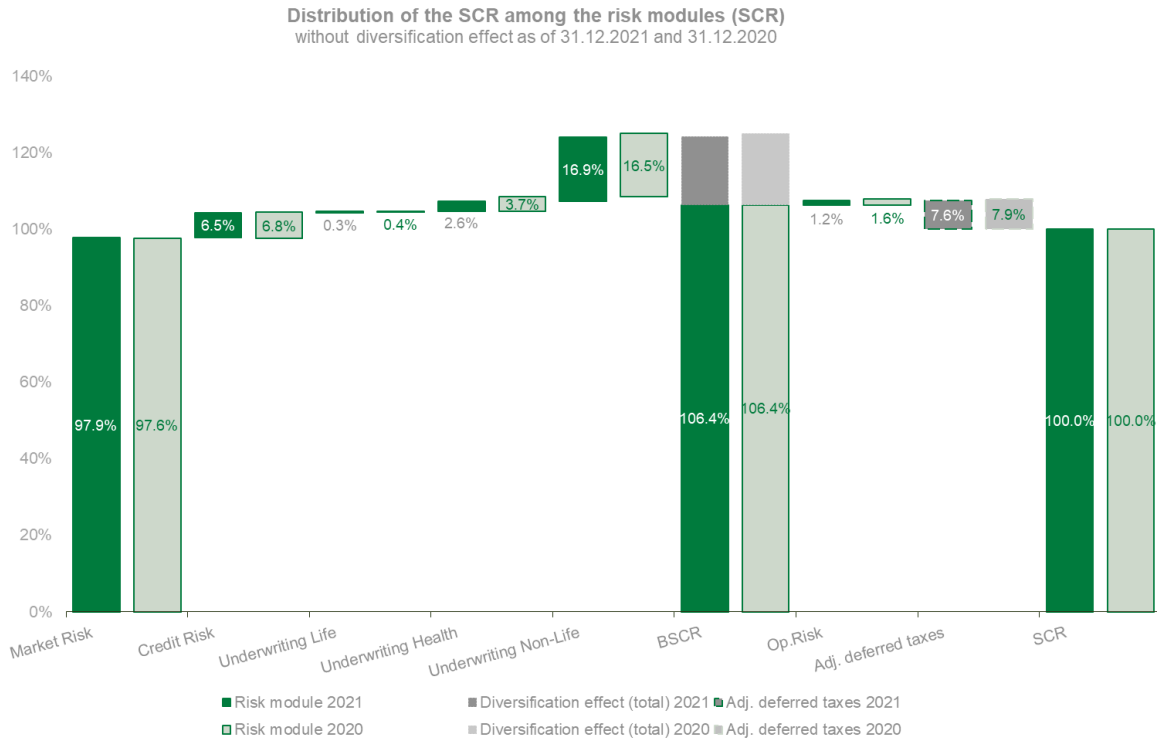
In case this internal limit is breached, an escalation process is started in which it is precisely defined who has to be informed and what measures have to be taken in order to reduce the risk again as quickly as possible.

The database for the determination of the risk profile of GRAWE RE is the result of the determination of the internal overall solvency needs and the result of the calculation of the solvency capital requirement (SCR) of the standard formula as of 31 December 2021. With regard to the calculation of the solvency capital requirement, reference is made to the statements in section E.2.

GRAWE RE does not transfer any risks to special-purpose vehicles and does not hold any participation in such either. There are no off-balance-sheet positions as of the reference date 31 December 2021.

Neither company-specific parameters, nor the matching adjustment nor the volatility adjustment are applied.

The risk profile from the **SCR result** as per 31 December 2021 is comprised as follows:



The material risk positions of the SCR calculation are the market risk followed by the underwriting risk Non-Life and credit risk. The detailed risk values of the SCR calculation can be found in section E.2.

## Materiality

At GRAWE RE, risks are classified as material if they have been assessed either in the "critical/red area" within the internal risk assessment or exceeded the threshold of 10% of the SCR on a sub-module basis after diversification. These include in any case the market risks as well as underwriting risk Non-Life.

With regard to the assessment of the materiality criteria, it should be noted that individual risks that are not assessed as material can exceed the limit threshold cumulatively.

In order to give a more detailed overview of the risk profile of GRAWE RE, all risks that meet the aforementioned criteria are explained in this report.

## C.1 Underwriting risk

**Underwriting risk** is defined as the risk of loss, or adverse change in the value of (re-)insurance liabilities, due to inadequate pricing and provisioning assumptions. In the following, only underwriting risk Non-Life reinsurance is being assessed as underwriting risk Life and Health are not deemed to be material. The underwriting risks of **non-life reinsurance** of GRAWE RE are comprised of the following risks:

- Premium and reserve risk
- Catastrophe risk.

**Premium risk** (= underwriting risk) are risks in which the realization of the technical results deviates from the expectation of the current financial year (e.g. due to a high amount of mass damages, numerous major damages and natural disasters, etc.).

The **reserve risk** describes the uncertainty that is associated with the forecast of the settlement of already incurred losses (e.g. incurred but not reported [IBNR] claims, legislative amendments, high increase in inflation, and increased cost on individual claims).

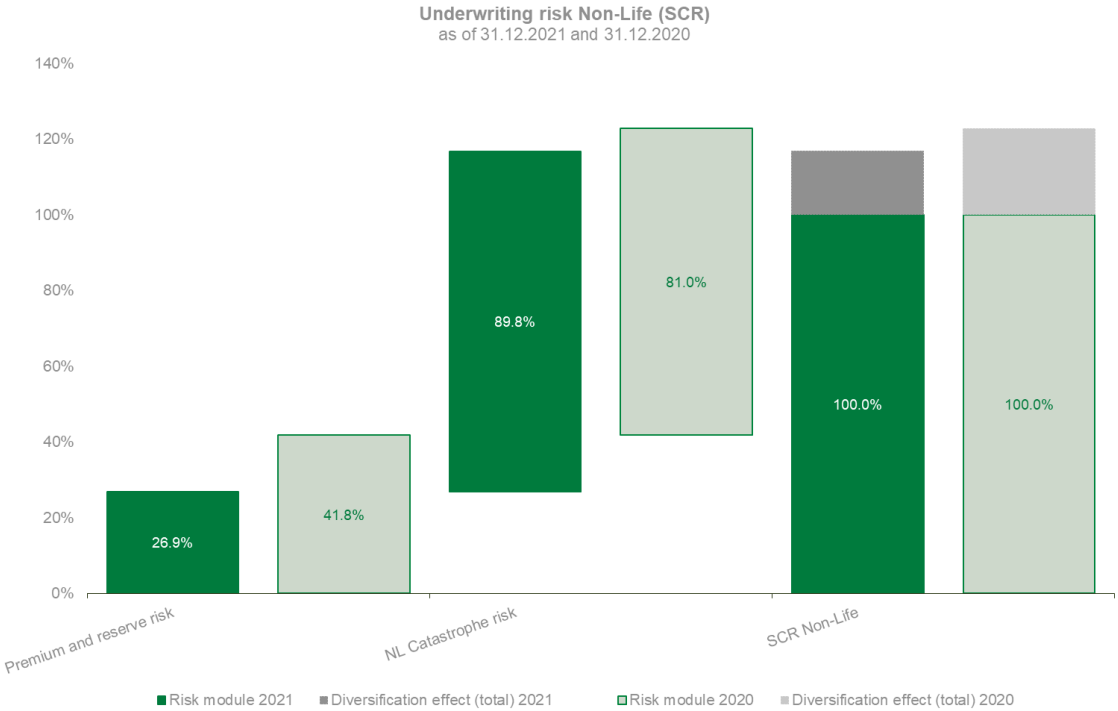
In the **catastrophe risks Non-Life** a differentiation is made between natural catastrophe risks, that include incidents caused by flood, hail, earthquake and windstorm, and disasters that are man-made (such as fire or liability).

GRAWE RE does not operate in the health reinsurance business itself. The risks of the income protection reinsurance are assigned according to the standard formula to the underwriting **Health similar to Non-Life** as following:

- Premium and reserve risk from Health similar to Non-Life and
- Catastrophe risk

### C.1.1 Risk exposure

#### Underwriting risk Non-Life



The **Underwriting risk Non-Life** has a material impact on the risk profile of GRAWE RE with 16.9% (2020: 16.5%) of the total SCR that is attributable mostly to the Non-Life catastrophe risk with a share of 89.8% (2020: 81.0%) on the SCR Non-Life. The remaining 26.9% (2020: 41.8%) are attributable to the premium and reserve risk. In general, the development of underwriting risk Non-Life is rather stable due to the steady business. As for the Y2021 the calculation methodology of the cedent was the major contributing factor for an increase in Non-Life catastrophe risk.

In GRAWE RE the **premium and reserve risk** in the area of underwriting Non-Life consists of the fire and other property divisions and general liability reinsurance.

The **catastrophe risk Non-Life** results from the natural catastrophes windstorm, flood, hail and earthquake and from the man-made scenarios (fire and liability).

For the internal risk analysis, specific scenarios are simulated at GRAWE RE based on the reinsurance portfolio for natural and man-made catastrophes. Due to the existing portfolio structure and the maximum burden of losses for GRAWE RE that may arise out of the reinsurance treaties, the respective amount for the single scenario events is relatively low.

### **Underwriting risk Health**

The **Underwriting risk Health** results solely from the income protection reinsurance. The risk is assigned to Health similar to Non-Life, from which 95.8% (2020: 96.8%) result from premium and reserve risk and 4.2% (2020: 3.2%) from health catastrophe risk which is determined by the mass accident scenario.

### **Underwriting risk Life**

Underwriting risk Life is not deemed to be material, which is due to the nature of the reinsurance treaties, which are concluded with a duration of one year.

### **Prudent Person Principle applied on the coverage of technical provisions**

The Prudent Person Principle stipulated in Article 139 of the LAW requires security, quality, liquidity and profitability for all assets as well as a sufficient and adequate coverage of the technical provisions. The assets that are held to cover the technical provisions are invested in the best interest of the reinsured persons and the shareholders.

In the **Life reinsurance** area, the concrete investment objective is dependent on the factors average actuarial interest rates, free equity capital in conjunction with the fluctuation of the value of the portfolio resulting from the target return and the structure of the liability side. The goal is the payment of any claims that may arise in the life reinsurance treaties, whilst minimising the investment risk and taking into account the risk-bearing capacity of the company.

In the **Non-Life reinsurance** area, the specific investment goal is not subject to any minimum interest rates but rather having investments that can be easily converted into cash in case of large claims due to natural disasters, etc. A risk-appropriate profit is strived for at reasonable risk.

**Technical provisions** indicate in the balance sheet of (re-)insurance companies future obligations from reinsurance treaties in accordance with the statutory regulations for valuation. They must be also formed in the annual financial statement, if necessary, in a way to permanently ensure the obligations from reinsurance contracts.

The business accepted by GRAWE RE is predominately stemming from GRAWE Group members (90% of the business) and mainly has proportional quota share character. Thus, GRAWE RE as reinsurer recognizes its share of the original technical reserves of the ceding entities given in the reinsurance statements. As within GRAWE Group, the same standards and systems are applied and the underwriting follows a very conservative approach, the original reserves given within the reinsurance statements are known to be sufficient and do not require any additional reserves.

The **coverage requirement** comprises of the technical provisions in life and non-life. In life reinsurance, the coverage requirement must always be met in full by the assets earmarked for life provisions. In the non-life business, it is in general ensured for the long-tail divisions (such as liability or accident) that the assets match the term of the technical provisions as closely as possible.

The Prudent Person Principle applied on the coverage of technical provisions is ensured through the measures indicated above.

### **C.1.2 Risk concentration**

Risk concentrations can jeopardise the solvency or liquidity of the (re-)insurance company. They can, for instance, arise from

- individual counterparties,
- groups of counterparties who are linked to one another,
- geographical areas or sectors, but also from
- natural catastrophes or man-made catastrophes.

The biggest risk in the area of non-life results from risk concentrations of events with low occurrence probability but big impact on the liabilities of GRAWE RE, such as natural catastrophes. The risks regarding non-life and health are closely monitored and they have been constant and on a low level in the past few years due to the quality of the underwriting and partners. The prudent approach on the specific risks will continue.

Furthermore, GRAWE RE acts as the guarantor for the premiums on pension policies (PZV) of two Group companies (parent company Grazer Wechselseitige Versicherung AG and HYPO Versicherung AG) and four external insurance companies.

The performance of this private pension scheme product is linked to the performance of investments which serve as an index for the value of the contract. These pension contracts guarantee the amount of gross premiums paid by the policy holders plus the extra premiums provided by the government of Austria in cases of death, and subject to some conditions, in cases of expiration or premature termination of the contracts. The Company provides cover for any death claims and guarantee payments paid by the ceding companies. The difference between the investment value of the contracts and the death benefit or guaranteed amount paid by ceding companies will be reimbursed by GRAWE RE.

The risks concerning PZV are calculated and monitored on a monthly basis. In overall, the risks do not represent a material risk in GRAWE RE in the internal view as the reinsurance treaty stipulates that the guarantee is only provided by GRAWE RE if the policy holder chooses one of the options as defined in the Austrian Income Tax Act (Section 108i – so called 'intended

use'). The percentage of intended use is currently at a low level, in a range of 5% to 10%. Furthermore, all PZV reinsurance contracts are 1-year contracts and can thus be yearly terminated.

In total and based on the SCR results, in no area neither in the area of Underwriting Life nor Underwriting Health nor Underwriting Non-Life concentrations are identified.

### **C.1.3 Retrocession and other risk mitigation techniques**

In accordance with "Part 1 Definition and introductory provisions" of the LAW, **risk mitigation techniques** (including retrocession) describe all techniques which put insurance and reinsurance companies in the position to transfer a part or all of their risks to another party.

In the case of risk-mitigation techniques, it can be distinguished between reinsurance-based risk mitigation (i.e. retrocession) and financial risk-mitigation (i.e. financial derivatives).

In GRAWE RE, only traditional retrocession instruments are applied with retrocession partners that belong to the group. Retrocession is used to limit the risks assumed (=underwriting risks), especially peak risks. The portfolio will be homogenized and the volatility will be reduced. GRAWE RE uses in the area of underwriting risk retrocession as a risk-mitigating measure. Thus, peak risks and exposures can be covered or portfolios homogenised.

Derivatives and structured securities serve as financial risk mitigation instruments, e.g.

- interest rate structures (such as interest rate swaps),
- equity structures,
- structured loans and
- structured bonds (e.g. steepener callables, multiple tranches, reverse of convertibles)

GRAWE RE's investment strategy clearly states that such investments should be avoided and no direct investment in such instruments was in place as at 31 December 2021. Some of the above may be used by the asset managers that are managing the structured funds for protection purposes and never for speculative purposes.

The risk thereby lies within the fund management itself and not with GRAWE RE.

### **C.1.4 Liquidity risk future profits**

The amount of Expected Profits Included in Future Premiums (in short EPIFP) is taken into account in the liquidity management.

The EPIFP is a Tier 1 own funds component (as part of the reconciliation reserve) and amounts to kEUR 20 (2020: kEUR 34) in the area of life reinsurance in GRAWE RE as of 31 December 2021.

### **C.1.5 Risk sensitivity**

The risk sensitivities of the claims reserve in the Non-Life area in GRAWE RE are examined based on statistical methods. These calculations are done on the basis of division groups (according to the LoB of the standard formula) and by using confidence levels.

Moreover, within the Asset Liability Management interest rate sensitives were calculated and their impact on the relevant positions for assets and also for Best Estimates for technical provisions.

## C.2 Market risk

GRAWE RE understands **market risk** to be the risk of a loss or disadvantageous change in the financial situation that results directly or indirectly from fluctuations in the amount and in the volatility of the market prices for the assets, liabilities and financial instruments.

### C.2.1 Risk exposure

At GRAWE RE in an analogous way to the standard formula, the market risks are divided into the following sub-risks:

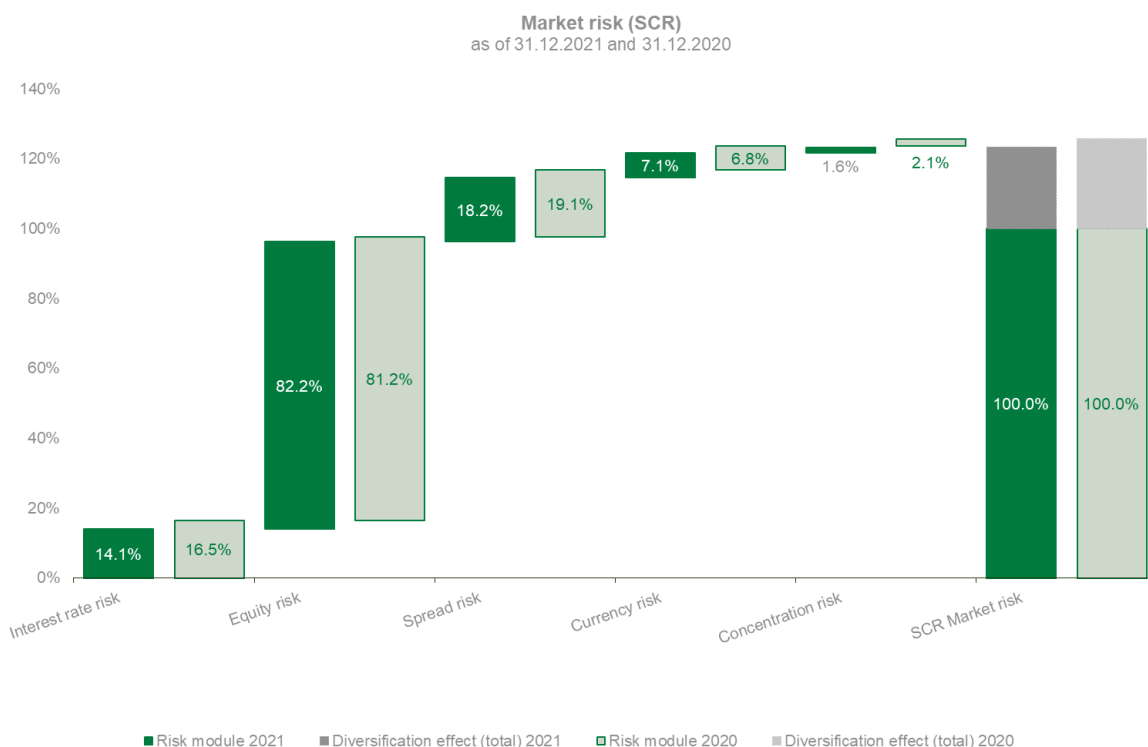
- Interest rate risk,
- equity risk,
- property risk,
- spread risk,
- currency risk and
- concentration risk.

The market risks of GRAWE RE form the largest risk position.

According to the specifications from Solvency II, all assets "are to be invested in a form and manner that guarantees the safety, the quality, the liquidity and the profitability of the entire portfolio" (Article 139 of the LAW). For the management of investments, the principle of freedom of investment applies by taking into account the "Prudent Personal Principle". Great attention is paid to the monitoring and management of the investment risks.

Only those types of investments, whose opportunities and risks can be understood and assessed adequately, shall be chosen.





The most material risk within the market risks of GRAWE RE is the **equity risk** amounting to 82.2% (2020: 81.2%) of the SCR market risk. The equity risk describes the possible volatilities in the share prices. The amount of the equity risk results primarily due to the strategic participation in Medlife Insurance Ltd. where the equity risk stemming from this participation is kEUR 26,099 (2020: kEUR 24,081) and an additional amount from Flutrana of kEUR 613 (2020: kEUR 612). The strategic participation is stressed according to the standard formula at a level of 22%. The remaining amount of risk comes from type 1 equity exposure stressed at 45.9% resulting in an additional equity risk of kEUR 8,702 (2020: kEUR 6,322) and equities type 2 stressed at 55.9% adding another kEUR 212 (2020: kEUR 173).

**Spread risk** in GRAWE RE represents 18.2% (2020: 19.1%) of the SCR market risk. The spread risk incorporates the values of assets, liabilities and financial instruments with regard to changes in the amount or in the volatility of the profit spread over the risk-free interest curve (credit spread). Changes in the credit spread arise, for instance, from a deterioration in the credit rating of security issuers.

The **interest rate risk** in GRAWE RE results from changes in the market value of interest-bearing financial instruments caused by changes in the interest curve and has a share of 14.1% (2020: 16.5%) of the SCR market risk. The relevant risk-free interest rate curves used for the calculations of the solvency capital requirement for interest rate risk is as per 31 December 2021. In the interest rate risk of the standard formula, in addition to the interest sensitivity of the investments (asset side) also those of the liabilities are taken into consideration.

**Currency risk** is the sensitivity of assets, liabilities and financial instruments with regard to changes in the amount or in the volatility of the exchange rates. Despite the currency-matched investment at GRAWE RE, the currency risk is only 7.1% (2020: 6.8%) of the SCR market risk.

**Concentration risk** includes the risks that are caused by a lack of diversification of the capital investment portfolio or by a high exposure to the default risk of a single issuer of securities or

a group of related issuers. In GRAWE RE this risk represents only 1.6% (2020: 2.1%) of the SCR market risk.

### **Prudent Person Principle in the asset management**

The Prudent Person Principle has always been taken into account at GRAWE RE in that investment has only been in assets whose risks can be identified, assessed, monitored, managed and steered. In addition, these risks must be integrated into the reporting system in an appropriate manner and taken into account in the calculation of the overall solvency needs during the ORSA process.

The investment policy of GRAWE RE is based on the goals specified by the Board of Directors of GRAWE RE with regard to the safety, profitability and liquidity of the invested funds. The paramount goal in the investment by GRAWE RE exists in the continuous safeguarding of the fulfilment of the obligations from the reinsurance contracts and at a second stage to maintain an acceptable return to the shareholders. In the long term, in-depth, well-balanced investment products offer the highest safety and the most sustainable profit, taking into account the risk/profit aspects as well as rating requirements. The balance of the strategic asset allocation goes beyond the statutory specifications and follows the longstanding, successful, safety-oriented strategy of GRAWE RE. A fundamental principle is the broad spread within the respective asset category.

It is ensured through limit setting and suitable control and reporting processes that no unwanted or excessive assumption of risk is possible within the investment process of GRAWE RE and that the investment policy sticks to the safety-oriented principles described.

The investment limits are analysed twice a year in the asset allocation meeting with the Board of Directors of GRAWE RE and checked for their validity and/or for any need for amendment.

The upper threshold for interest and equity structures is defined by limit setting. Without exception, purely speculative goals are not pursued. In addition, **structured products** (for interest hedging) are only used within the framework of the strategically selected asset allocation with the goal of cost efficiency and an improvement in the risk profile. When determining permissible volumes, the increasing risk content of the envisaged categories is taken into account.

### **C.2.2 Risk concentration**

A material risk concentration is one that exceeds 10% of the SCR. The overall risk for year 2021 was below 10% so it was considered to not be material. For further details refer to section C.2.1.

### **C.2.3 Risk mitigation**

GRAWE RE uses derivatives (incl. structured products) as a risk reduction technique in the market risks. These are so-called foreign currency forwards that are concluded within the investment funds as pure foreign currency hedging transactions.

GRAWE RE also uses such an instrument to convert once per year any USD dividend income received from Medlife Insurance Ltd. in EUR considering that after performing the appropriate test the USD currency is not needed.

#### **C.2.4 Risk sensitivity**

Risk sensitivities are evaluated within the ORSA process and across the market risk module in order to test the effect of a doubling of any risk module on the BSCR. Even when doubling the most sensitive risk, which is for GRAWE RE equity risk, the company has still a sufficiently high solvency ratio.

### **C.3 Credit risk**

The **credit risk** (also counterparty default risk) identifies the risk of loss or an adverse change in the financial situation, resulting from fluctuations in the creditworthiness of issuers of securities, counterparties and other debtors against which insurance and reinsurance undertakings have receivables. It occurs in the form of counterparty default risk, spread risk or market risk concentrations.

The possible types of the default risk in the form of spread risks or market concentrations were already dealt with under section C.2 meaning that in this section solely the counterparty default risk is explained..

#### **C.3.1 Risk exposure**

The counterparty default risk at GRAWE RE primarily relates to the possible loss of deposits at commercial banks (predominantly Group-internal) or the default of retrocession partners. The loss of custodian account receivables from insurance business taken as reinsurance, obligations of third parties or guarantees play a subordinated role or no role at all.

The counterparty default risk of the standard formula is around 6.5% (2020: 6.8%) of the total SCR and thus plays a subordinated role in the risk profile of GRAWE RE.

A major part of the bank deposits lies within Group-internal banks. GRAWE RE is solely reinsured at GRAWE AG which is not rated. As a result of the good solvency capital base the probability of default can be very well assessed and is thus minimised.

In the selection of external retrocession partners, a minimum rating of A- according to Standard & Poor's and/or Moody's or, in case of long-tail businesses, a minimum rating of A+ are aspired. Nevertheless, GRAWE AG is considered to be an appropriate retrocessionaire for GRAWE RE as it is not only the parent company of GRAWE RE but with a SCR above 300% a solid and financially strong company and highly diversified. Thus, the risk of default is very low.

With regard to banks, business relationships are entered into primarily with banks with a minimum rating of A according to Standard & Poor's and/or Moody's. If there is no rating available of one of the mentioned rating agencies, an internal evaluation of the business partner is carried out by increased analysis. Results from other rating agencies, annual reports, market experience, or other sources of information can be the basis for this.

In order to reduce the counterparty default risk, in addition to the guidelines attention is paid for credit and also a sufficient diversification of counterparties.

### C.3.2 Risk concentration

The counterparty default positions primarily relate to Group-internal banks and reinsurance companies and/or to a low extent commercial banks and other reinsurance partners with whom longstanding business relationships exist. Both the external commercial banks as well as the external retrocession partners have excellent credit ratings.

With the commercial banks, there is also a division over several banks; however, the short-term investment of liquid funds fluctuates over the course of time due to liquidity requirements and availability and is also dependent on the respective bank conditions. The defined limits per commercial bank also apply for Group-internal banks and are complied with at any rate.

### C.3.3 Risk mitigation

In the area of counterparty default risk, no risk mitigation techniques are applied beyond the internal risk-minimising measures such as strict selection of the retrocession partner and commercial banks as well as diversification of the business partners.

### C.3.4 Risk sensitivity

For the assessment of the risk sensitivity of the counterparty default risk, following scenarios are used to quantify the default risk and to analyse the impact of the risk on the overall situation of the company:

- Shock of the probabilities of default or downgrade of the ratings
- Complete default of a bank

The results show that the impact on own funds and capital requirements is not significant.

## C.4 Liquidity risk

The **liquidity risk** is the risk of losses arising from an actual or expected inability of the company to cover its financial obligations at the time of maturity.

According to “Part 1 Definition and introductory provisions” of the LAW, the liquidity risk designates the risk that the insurance and reinsurance undertakings are not able to realize investments and other assets in order to settle their financial obligations when they fall due.

The most common causes that can lead to the liquidity risk are:

- reduction in the value or in the usability of assets,
- the increase in the mismatch of maturities of assets and liabilities,
- the financial strength of the company and the perception of the markets that depend on a series of parameters (e.g. risk profile, solvency ratio, profitability, expected future trends, ratings, etc.) or
- an insufficient liquidity ratio of the company.

### **C.4.1 Risk exposure**

The liquidity risk pursuant to the definition above is not explicitly depicted per se in the standard formula; nevertheless, the assessment of the liquidity risk in the risk management process and in the ORSA process is important. In particular, the occurrence of a material risk (e.g. in the case of natural catastrophes) could result in a liquidity shortage.

At GRAWE RE, a weekly cash report is created. This approach ensures that there is no liquidity shortage even with short-term unexpected and/or unplanned claims payments or other payment outflows.

Should there actually be an increased need for cash and liquidity in the short term, GRAWE RE would be in a position to sell securities (of a good rating) at short notice (e.g. within a day) in order to generate the necessary liquid funds. Approx. 90% of the bond portfolio of GRAWE RE consists of bonds of a good rating of BBB- and higher.

The investment grade rating allowable in GRAWE RE according to the internal limit system is at the moment at BB+. For the said reasons, the liquidity risk was internally rated at zero at GRAWE RE due to the nature of its business.

### **C.4.2 Risk concentration**

No risk concentration was identified at GRAWE RE with regard to the liquidity risk.

### **C.4.3 Risk mitigation**

In the liquidity risk area, no risk-mitigation techniques are applied besides the internal risk-minimising measures such as regular cash flow reports and a cash flow planning.

### **C.4.4 Risk sensitivity**

The liquidity risk brings along a strong connection to other risks. For this reason, any increased liquidity need has also already been assessed with other scenarios. Further details can be found in section C.2.4.

## **C.5 Operational risk**

The operational risk is the risk of loss that arises from the inappropriateness or the failure of internal processes, employees, systems or through external events. Legal risks are also included. The typical representatives of the operational risk include causes of business interruptions as the result of e.g. fire or flooding events or IT failures that make an uninterrupted continuation of the business operations difficult or impossible. In addition, however, they also include damage caused by conscious fraud, errors in daily work processes or also risks that arise from human errors.

The operational risks are in general more difficult to identify and evaluate than other risks, meaning that GRAWE RE places a special focus on the possible different characteristics and takes these into account in a comprehensive manner.

### **C.5.1 Risk exposure**

The operational risk of GRAWE RE is calculated according to the standard formula, based on premiums collected and amounts to 1.2% (2020: 1.6%) of the SCR.

Particularly in the area of operational risks, the focus is not on quantification but on the development of suitable measures for the early identification of the risks and on the avoidance and reduction of its consequences (cf. section C.5.3).

### **C.5.2 Risk concentration**

In the operational risks, risk concentrations could occur in the areas outsourced by GRAWE RE (e.g. in the case of an IT failure).

### **C.5.3 Risk mitigation**

The potential operational risks can be reduced through suitable contingency plans such as the GRAWE IT contingency plan, Business Continuity Plan, etc.

The IT contingency management of GRAWE has been implemented since many years ago. In addition, there has been TÜV certification of the data centre of GRAWE since 2012. If an emergency occurs, an efficient staff and crisis management can thus be ensured.

Another central focus of the GRAWE IT contingency management is on the IT data security in order to ensure that no loss or misuse of critical data can occur. For this reason, there is a consistent system of security redundancies so that with minor failures of an IT system a smooth operation is ensured.

The Business Continuity Plan of GRAWE RE aims to ensure the upholding or restoration of the orderly business operations after an incident.

Anti-fraud measures and a well-functioning internal control system are other risk-mitigating measures within the operational risks.

In the cash-equivalent area of GRAWE RE, there are strict internal regulations and control procedures.

The effectiveness of the contingency plans is checked at regular intervals. The effectiveness of the internal control systems is regularly checked by the Internal Audit department of GRAWE RE in the course of the respective audits.

These risk-mitigating measures let to very low operational risks in the past at GRAWE RE.

### **C.5.4 Risk sensitivity**

To assess the risk sensitivity of the operational risks of GRAWE RE, scenarios for identified critical processes were defined in the contingency plans.

In the process, the worst-case scenarios are selected whose occurrence appears plausible for GRAWE RE. The potential scenarios include the failure of the IT over a lengthy period of time

and the loss of the headquarters in Graz (e.g. due to a fire). It was ensured in the existing contingency plans that the effects (e.g. loss of several persons over a lengthy period of time or restricted access possibilities to the business premises) are taken into account accordingly.

The appropriateness of the scenarios and their underlying assumptions are checked jointly with the contingency plans at least once a year and the results are taken into account appropriately in the assessment of the risk-bearing capacity.

## C.6 Other fundamental risks

In GRAWE RE, the following other risks were identified that are being continuously monitored:

- Strategic risks,
- Reputation risks,
- Risk from the asset liability management
- Pandemic risk.

The named risks are not explicitly taken into account in the standard formula. Within the ORSA process, however, none of the named risks proved to be material.

Newly occurring risks and changes in the risk profile of GRAWE RE are quickly identified through the quarterly reporting based on the ad-hoc risk reports of the risk owners with regard to risks that have occurred or potential risks so that, if necessary, it is possible to react in a timely manner (e.g. in the form of risk-mitigation measures). A change in the risk profile can influence both the business strategy and the risk strategy.

### C.6.1 Risk exposure

An explicit quantitative assessment by strategic or reputational risks is difficult, because they have mostly a quantitative impact in one or more other risk modules. Therefore, the assessment of strategic risks and reputational risks is made in the course of the annual risk assessment via an assessment matrix. These are non-material risks.

The **Asset Liability Management** is assessed in the course of stress tests (cf. section C.2.4). The results show that GRAWE RE also has sufficient own funds in extreme scenarios on the financial market.

A sustainability strategy was drawn up for GRAWE RE in 2021. The information required under the Regulation on sustainability-related disclosure requirements in the financial services sector (EU) 2020/2088 was published on GRAWE RE's website by 10 March 2021.

### C.6.2 Risk concentration

No risk concentrations are seen in the category "other fundamental risks".

### C.6.3 Risk mitigation

With the strategic and reputation risks, the focus is placed on the risk mitigation using contingency plans and other measures.

Through detailed risk analyses before strategically relevant business decisions, GRAWE RE counters **strategic risks** beforehand.

The reputation risk is monitored through the depiction of the most important risks and respective risks of GRAWE RE within the framework of the internal control system, whereby specifically the interaction with other risks is monitored as a reputation risk is frequently a trigger for the realisation of other risks. Potential reputation risks (among others also specific individual cases) are discussed within the Board of Directors. In addition, special countermeasures in the area of external communication and the next steps when an emergency occurs are described in contingency plans.

#### **C.6.4 Risk sensitivity**

For strategically wide-reaching decisions applicable scenario assessments are always performed.

### **C.7 Other information**

#### **Disclosure in accordance with s.9 of the Cyprus Law on the Encouragement of the Long-Term Active Participation of Shareholders of 2021 – Investment Strategy and Arrangements with Asset Managers**

Grawe RE has commissioned Grazer Wechselseitige Versicherung AG with the assessment of the premiums of its clients in compliance with the Law on Insurance and Reinsurance Services and Other Related Business. The agreement is concluded for an indefinite period of time.

The Investment Strategy's objective is to generate long-termed stable revenues while ensuring a capital guarantee, whereat the assessment is undertaken in accordance with the legal requirements for the insurance products. Therefore, separate incentives for a co-ordination of Grazer Wechselseitige Versicherung's Investment Strategy with the profile and duration of the liabilities of GRAWE RE are not provided.

The Investment Strategy and the accordingly applicable legal provisions allow for a broad diversification of the assets. Stocks traded on a regulated market only represent a small percentage of the investment strategy, which is why there haven't been provided any incentives to make medium to long-term improvements of the performance of those companies, in which there has been invested, via active contribution of Grazer Wechselseitige Versicherung AG.

Grazer Wechselseitige Versicherung AG's performance is evaluated continuously. For its activities in the field of asset management there has been agreed upon a charge in an amount customary in the market. The monitoring of the portfolio turnover costs is ascertained by the reporting required by law. A specific portfolio turnover range has not been defined.

The required information on the investment strategy in accordance with s.9 of the Cyprus Law on the Encouragement of the Long-Term Active Participation of Shareholders of 2021 is given in GRAWE RE's Solvency and Financial Condition Report (SFCR), which is available on the website under Financial Information.





## D. VALUATION FOR SOLVENCY PURPOSES

The valuation of the assets and liabilities in the solvency balance sheet is based on the economic value. Paragraphs 1 and 2 of Article 9 of the Delegated Regulation for Solvency II are the basis provision for assets and liabilities being valued according to International Financial Reporting Standards (IFRS) unless other regulations apply. As a general rule, the economic value thus corresponds to the market value pursuant to IFRS as adopted by the Commission in accordance with Regulation (EC) No 1606/2002 unless other provisions apply.

Pursuant to Section 77 of Chapter 6 of the LAW, insurance and reinsurance companies have to value their assets and liabilities for the determination of the values in the economic balance sheet as follows:

The **assets** are valued at the amount for which they could be exchanged between knowledgeable willing parties in an arm's length transaction.

The **liabilities** shall be valued at the amount for which they could be transferred, or settled, between knowledgeable willing parties in an arm's length transaction.

The valuation of the assets and liabilities of GRAWE RE is based on the going-concern basis pursuant to Article 7 of the Delegated Regulation. The technical provisions are calculated pursuant to the regulations for technical provisions (Article 76 to 86 of the Solvency II Directive 2009/138/EC).

The values in the annual financial statements are determined according to IFRS as adopted by the European Union and the requirements of the Cyprus Companies Law chapter 113.

Hereinafter the economic balance sheet of GRAWE RE as it is illustrated in the reporting table S.02.01 as of 31 December 2021 can be found. Only assets and other liabilities are applied that are used in the Solvency II balance template according to the technical operating standards for operations, formats and templates for the report of solvency and financial condition. Within the section D.1 and D.3 fundamentals, methods and relevant assumptions, that are the basics for the valuation of solvency purposes, are described for all relevant assets and other liabilities. Moreover, for these positions quantitative and qualitative descriptions for possible relevant differences in fundamentals, methods and relevant assumptions between the valuation for solvency purposes and the valuation according to IFRS/LAW are illustrated.

The economic balance sheet of GRAWE RE as of 31 December 2021 is as follows in the reporting table S.02.01:

## Economic Balance Sheet

		2021	2020
		KEUR	KEUR
<b>Assets</b>			
Goodwill	R0010	0	0
Deferred acquisition costs	R0020	0	0
Intangible assets	R0030	0	0
Deferred tax assets	R0040	11	5
Pension benefit surplus	R0050	0	0
Property, plant & equipment held for own use	R0060	1	6
Investments (other than assets held for index-linked and unit-linked contracts)	R0070	251,225	238,388
Property (other than for own use)	R0080	0	0
Holdings in related undertakings, including participations	R0090	121,419	112,239
Equities	R0100	4	3
Equities - listed	R0110	4	3
Equities - unlisted	R0120	0	0
Bonds	R0130	68,245	77,936
Government Bonds	R0140	25,340	28,417
Corporate Bonds	R0150	41,252	48,340
Structured notes	R0160	1,653	1,179
Collateralised securities	R0170	0	0
Collective Investments Undertakings	R0180	61,557	48,210
Derivatives	R0190	0	0
Deposits other than cash equivalents	R0200	0	0
Other investments	R0210	0	0
Assets held for index-linked and unit-linked contracts	R0220	0	0
Loans and mortgages	R0230	0	0
Loans on policies	R0240	0	0
Loans and mortgages to individuals	R0250	0	0
Other loans and mortgages	R0260	0	0
Reinsurance recoverables from:	R0270	0	0
Non-life and health similar to non-life	R0280	0	0
Non-life excluding health	R0290	0	0
Health similar to non-life	R0300	0	0
Life and health similar to life, excluding health and index-linked and unit-linked	R0310	0	0
Health similar to life	R0320	0	0
Life excluding health and index-linked and unit-linked	R0330	0	0
Life index-linked and unit-linked	R0340	0	0
Deposits to cedants	R0350	0	0
Insurance and intermediaries receivables	R0360	5,083	4,477
Reinsurance receivables	R0370	0	0
Receivables (trade, not insurance)	R0380	7,569	5,746
Own shares (held directly)	R0390	0	0
Amounts due in respect of own fund items or initial fund called up but not yet paid in	R0400	0	0
Cash and cash equivalents	R0410	888	3,785
Any other assets, not elsewhere shown	R0420	6	6
<b>Total assets</b>	<b>R0500</b>	<b>264,782</b>	<b>252,412</b>

## Economic Balance Sheet

		2021	2020
		kEUR	kEUR
<b>Liabilities</b>			
Technical provisions – non-life	R0510	7,320	8,477
Technical provisions – non-life (excluding health)	R0520	5,274	6,495
Technical provisions calculated as a whole	R0530	0	0
Best Estimate	R0540	4,488	5,523
Risk margin	R0550	786	972
Technical provisions - health (similar to non-life)	R0560	2,046	1,982
Technical provisions calculated as a whole	R0570	0	0
Best Estimate	R0580	1,863	1,810
Risk margin	R0590	183	172
Technical provisions - life (excluding index-linked and unit-linked)	R0600	4,543	4,766
Technical provisions - health (similar to life)	R0610	0	0
Technical provisions calculated as a whole	R0620	0	0
Best Estimate	R0630	0	0
Risk margin	R0640	0	0
Technical provisions – life (excluding health and index-linked and unit-linked)	R0650	4,543	4,766
Technical provisions calculated as a whole	R0660	0	0
Best Estimate	R0670	4,526	4,737
Risk margin	R0680	16	29
Technical provisions – index-linked and unit-linked	R0690	0	0
Technical provisions calculated as a whole	R0700	0	0
Best Estimate	R0710	0	0
Risk margin	R0720	0	0
Other technical provisions	R0730	0	0
Contingent liabilities	R0740	0	0
Provisions other than technical provisions	R0750	47	47
Pension benefit obligations	R0760	0	0
Deposits from reinsurers	R0770	0	0
Deferred tax liabilities	R0780	6,049	5,476
Derivatives	R0790	0	0
Debts owed to credit institutions	R0800	0	0
Insurance & intermediaries payables	R0820	223	6,812
Reinsurance payables	R0830	12	17
Payables (trade, not insurance)	R0840	113	410
Subordinated liabilities	R0850	0	0
Subordinated liabilities not in Basic Own Funds	R0860	0	0
Subordinated liabilities in Basic Own Funds	R0870	0	0
Any other liabilities, not elsewhere shown	R0880	0	0
<b>Total liabilities</b>	<b>R0900</b>	<b>18,306</b>	<b>26,005</b>
<b>Excess of assets over liabilities</b>	<b>R1000</b>	<b>246,476</b>	<b>226,407</b>

# D.1 Assets

## D.1.1 Explanation of the valuation differences per category of asset

### D.1.1.1 Intangible assets

Currently, a purchased goodwill or deferred conclusion costs are not applied neither in the annual financial statements according to IFRS nor in the economic balance sheet of GRAWE RE.

Other intangible assets are valued at kEUR 0 in the economic balance sheet above and kEUR 87 in the financial statements prepared under IFRS. The amount represents licences and software development and implementation costs that will be used in the future to facilitate the company's reporting under IFRS17.

### D.1.1.2 Deferred tax assets

The deferred tax assets in the economic balance sheet amount to kEUR 11 and in contrast to the financial statements under IFRS the amount shown is kEUR 0.

In the economic balance sheet, a tax rate of 12.5% for the determination of the deferred taxes was applied in the reporting year at GRAWE RE in the balance sheet for both life and non-life business.

### D.1.1.3 Property, plant and equipment

Property, plant and equipment are presented at cost net of accumulated depreciation and any possible impairment. Depreciation on property, plant and equipment is calculated on a monthly basis using the straight-line method over their estimated useful lives using the rates shown in the table below.

	Annual %
Furniture and fittings	25
Leasehold Improvements	25
Equipment	25
Computer hardware	25

The assets residual values and useful life are reviewed, and adjusted if appropriate, at each reporting date. The depreciation provision is included in the administration expenses.

An item of property, plant and equipment is derecognized upon disposal or when no future economic benefits are expected to arise from the continued use of asset. Any gain or loss arising on the disposal or retirement of an item of property, plant and equipment is determined as the difference between the sales proceeds and the carrying amount of the assets and is recognised in profit or loss.

#### **D.1.1.3.1 Property, plant and equipment for own use**

The valuation for this item is calculated as the description above and the value was kEUR 1 in both, the annual financial statements under IFRS and the economic balance sheet reported under Solvency II.

#### **D.1.1.4 Holdings in related undertakings including participations**

The economic value of holdings in related undertakings and participations corresponds to the market value. The market value of holdings in related undertakings and participations is determined pursuant to Article 13 Par. 1 Letter b of the Delegated Regulation with the adjusted equity method. There is no valuation at listed share prices as holdings in related undertakings and participations of GRAWE RE do not include any shares in stock-exchange-listed companies.

The market value of the participation in Medlife Insurance Ltd in the amount of kEUR 118,632 is determined based on the own funds calculated and reported quarterly under the LAW and the economic balance sheet submitted as at 31 December 2021 to the SI after converting the total amount from USD to EUR using the rate 1.1326. The market value of the participation in Flutrana Enterprises Limited in the amount of kEUR 2,787 is determined as per the total equity or own funds of the latest available audited financial statements as at 31 December 2021 that have been prepared under the relevant IFRS standards.

#### **D.1.1.5 Equities, bonds and organisms for common investments (excluding assets for index and unit linked contracts)**

Shares, securities via participation and supplementary capital and other non-fixed-interest-bearing securities, bonds and organisms in common investments that are not held within the framework of unit and index-linked life insurance are valued in the annual financial statements according to market values as these are described in current IFRS's.

The economic value of these assets corresponds to the fair value of the asset to be applied at the time of the valuation. To determine the fair value to be applied, the valuation hierarchy defined in section D.1.2.1 is applied.

The fair value of equities, organisms in common investments that are not held for unit- and index-linked life insurance, as well as of bonds corresponds to the book value or a market value that is above the book value.

There are no valuation differences regarding equities, bonds and collective investment undertakings between the value in the economic balance sheet and the book value according to IFRS as of the reference date 31 December 2021.

#### **D.1.1.6 Derivatives**

In the portfolio of GRAWE RE, there were no freestanding, open derivative liabilities neither in the economic balance sheet as of 31 December 2021 nor in the annual financial statements according to IFRS as per 31 December 2021.

As stated in section C.2.1, derivatives are used within the framework of investment funds if they result in an optimisation/improvement in the investment performance.

#### **D.1.1.7 Receivables from reinsurances and intermediaries**

Receivables from reinsurance companies are indicated under this item.

Receivables in the economic balance sheet are valued with the economic value. In the process, it is assumed that all receivables have a term of up to 12 months. The consideration of these short-term receivables is done at the nominal value less individual and general value adjustments carried out and for reasons of proportionality corresponds to the approach in the annual financial statements according to IFRS.

#### **D.1.1.8 Receivables (trade not insurance)**

The receivables, trade not insurance primarily include receivables towards affiliated companies. In addition, receivables towards other insurance companies that do not originate from the reinsurance and receivables, trade not insurance towards suppliers as well as receivables towards tax and levies' authorities are indicated under this item.

Receivables in the economic balance sheet are valued with the economic value. In the process, it is assumed that all receivables have a term of up to 12 months. These short-term receivables are considered with the nominal value less individual and general value adjustments; this corresponds to the approach in the annual financial statements according to IFRS.

#### **D.1.1.9 Cash and cash equivalents**

The item includes domestic cash and deposits at banks. Foreign cash (currencies) and deposits at banks in foreign currency will be converted at the ECB reference exchange rate as of the balance sheet reference date.

The liquid funds are valued at the nominal value in the annual financial statements according to IFRS. This value corresponds to the present value pursuant to the International Accounting Standards. There are thus no differences between the approach of the economic balance sheet and the book value in the annual financial statements according to IFRS.

As of 31 December 2021 cash and cash equivalents amounted to kEUR 888 in the economic balance sheet as well as in the balance sheet according to IFRS.

#### **D.1.1.10 Any other assets, not elsewhere shown**

This item includes accruals from interest on tax pre-payments. The other assets in the economic balance sheet are valued at the economic value. For reasons of proportionality, the book value of the economic balance sheet corresponds to the book value in the annual financial statements according to IFRS and amounts to kEUR 6 as of 31 December 2021. The accrued interests from securities are assigned in the economic balance sheet to the market value of the investments for which it is incurred and displayed in the corresponding balance sheet position of the economic balance sheet.

## **D.1.2 Assessments that can fundamentally influence the valuation approaches**

### **D.1.2.1 Valuation models of financial assets**

The fair value of shares, investment funds that are not held for unit and index-linked life insurance, other non-fixed-interest-bearing securities, bonds and other fixed-interest-bearing securities corresponds to the book value or a stock exchange/market value.

#### **D.1.2.1.1 Listed prices on an active market (Level I)**

Financial assets are valued based on the market prices that are listed on active markets for same assets.

##### **Definition of an active market**

An active market is considered as a market on which business transactions take place with assets in sufficient frequency and volume so that price information is available on a continuous basis. If a financial instrument is managed on a recognised market/stock exchange, it is called a listed financial instrument. Regular transactions between independent contractual partners are not required for this but a low trading volume, a low number of transactions and the expansion of the bid-ask spread (spread) generally indicates the lack of an active market.

Another characteristic of liquidity is the volume of the issue. It can be usually assumed that under prevalent market conditions benchmark issues (from a volume of around EUR 500 million) can be seen as liquid.

In the valuation, GRAWE RE fundamentally assumes that sovereign bonds in the respective country currency can be seen as liquid.

##### **Price sources to determine the listed market prices**

The price sources of the market prices are defined by the Asset Management department, transferred to their system and continually updated.

Securities whose valuation prices can be found in the Bloomberg information system will be rated at this price if it concerns liquid market prices. With investment funds, the valuation is done by the fund management program of Security KAG that is continually updated based on the current price information.

#### **D.1.2.1.2 Valuation methods based on verifiable market data (Level II)**

In cases in which there is no listing on a stock exchange or a market cannot be seen as active due to limited activity of the market, quoted market prices in active markets for similar assets and liabilities with adjustments to reflect differences are used to determine the fair value of a security.

#### **D.1.2.1.3 Model valuations (Level III)**

In cases in which neither listed prices on an active market (Level I) nor verifiable market data (Level II) are available to determine the fair value of a security, valuation models are used that are based on assumptions and estimates.



GRAWE RE applies valuation procedures that are appropriate for the respective circumstance and for which sufficient data are available to measure the fair value to be applied, whereby in compliance with IFRS 13 the use of relevant verifiable input factors is maximised and that of non-verifiable input factors minimised.

If the most important parameters of the model (e.g. interest curves, credit spreads...) can be monitored on the market, the security to be valued will be valued on the basis of these methods.

The goal when using a valuation method is to determine the price at which under current market conditions on the valuation reference date an orderly business transaction could take place between two independent market participants when the asset would be sold or the liability transferred.

The following three valuation methods are in compliance with Art. 10 Par. 7 of the LAW:

- **Market-based approach** - uses prices and other relevant information that are generated by market transactions and include identical or comparable assets, liabilities or a group of assets or liabilities (e.g. a business operation)
- **Cost-based approach** - reflects the amount that would currently be required in order to replace the service capacity of an asset (current replacement costs)
- **Income-based approach** - converts future amounts (payment streams or costs and earnings) into a single current (discounted) amount that reflects the current market expectations with regard to these future amounts (cash value method)

Non-verifiable input factors are used to calculate the fair value to be applied if relevant verifiable input factors are not available. A company develops non-verifiable input factors using the information that is available in the best possible form in this circumstance which may include the company's own data. In the process, all available information about the assumptions made by market participants is to be taken into account.

If non-verifiable input factors are used, the company's own data must be adjusted.

#### **D.1.2.1.4 Value reductions of financial assets**

GRAWE RE checks at least on each report reference date whether there are objective indications for a value reduction in an asset. All assets are assessed for specific value reductions.

Indications of a need for a value reduction can be, e.g.:

- Payment arrears
- Failed redevelopment measures
- Threat of insolvency and over indebtedness
- Deferment or waiver of payment obligations of the borrower
- Opening of insolvency proceedings

#### **D.1.2.2 Deferred tax**

The deferred tax equals the expected future tax profits (deferred tax assets) or tax payment (deferred tax liability). The evaluation of deferred taxes is based on the difference between the value of each individual asset and each individual liability in the economic balance sheet and

in the fiscal balance sheet. The temporary differences determined in such a way are multiplied with the individual corporate tax rate. There is no discounting of the deferred taxes.

Permanent differences between the economic balance sheet and the fiscal balance sheet do not trigger any tax deferrals pursuant to IAS 12.

A positive value may only be assigned to deferred tax assets if it is probable that there will be taxable profits in future against which the deferred tax claim can be offset, whereby all legal and administrative regulations regarding temporal restrictions for the carry forward of not yet used tax credits or the carry forward of not yet used fiscal losses are taken into account.

Deferred tax assets and liabilities in Cyprus are offset when there is a legal enforceable right to set off current tax assets against current tax liabilities and when the deferred taxes relate to the same fiscal authority.

The deferred tax assets are indicated under the item "Deferred tax assets" of the assets in the economic balance sheet and the deferred tax liabilities under the item "Deferred tax liability". There is no netting with the posted deferred tax liabilities in the economic balance sheet. In the economic balance a tax rate of 12.5% was applied for the valuation of deferred taxes for GRAWE RE.

### **D.1.2.3 Holdings in related undertakings**

The economic value of holdings in related undertakings and participations corresponds to the market value. The market value of holdings in related undertakings and participations is determined pursuant to Article 13 Par. 1 Letter b of the Delegated Regulation with the adjusted equity method.

There is no valuation at quoted market prices as holdings in related undertakings and participations of GRAWE RE do not include any shares in stock-exchange-listed companies.

Any changes in the own funds of the participating subsidiaries, i.e. their profits and/or losses thus have a direct effect on the fair value of the participation.

The market value of the participation in Medlife Insurance Ltd in the amount of kEUR 118,632 is determined based on the own funds calculated and reported under the law and the economic balance sheet submitted as at 31 December 2021 to the SI after converting the total amount from USD to EUR using the rate 1.133. In the financial statements as at 31 of December 2021 under IFRS this investment is shown at a cost of kEUR 10,011.

The market value of the participation in Flutrana Enterprises Limited in the amount of kEUR 2,787 is determined as per the total equity or own funds of the latest available unaudited financial statements as at 31 December 2021 that have been prepared under the relevant IFRS standards. In the unaudited financial statements as at 31 of December 2021 under IFRS this investment is shown at a cost of kEUR 2,800.

## **D.2 Technical provisions**

The technical provisions represent all current claims from ceding companies against GRAWE RE. They are calculated for the balance based on actuarial principles.

The technical provisions under Solvency II are derived as the sum of two components: the Best Estimate (in non-life further split into claims provisions and premium provisions) and the risk margin. The calculation of the risk margin is explained in section D.2.7.

## D.2.1 Non-Life

### D.2.1.1 Premium provision

Basis for calculating the premium provision is the upright contract portfolio. The basic idea is the "profitability of a reinsurance contract", including cash flow projections for all relevant cash flows and discounting them with the EIOPA interest curves. In general, the Best Estimate of the premiums provision is the difference between the discounted future premium income and the future costs that arise from claims under consideration of inflation expectations and the specific contract boundaries. For GRAWE RE, the premium provision is calculated under consideration of the accepted reinsurance contract boundaries as the unearned premium multiplied by the combined ratio.

Premium provisions Non-Life		Gross Best Estimate		Net Best Estimate		Reinsurance Recoverables	
		2021	2020	2021	2020	2021	2020
LoB	Type of reinsurance	kEUR	kEUR	kEUR	kEUR	kEUR	kEUR
14x	Income protection reinsurance	323	307	323	307	0	0
19x	Fire and other damage to property reinsurance	464	417	464	417	0	0
20x	General liability reinsurance	142	143	142	143	0	0
<b>Total Non-Life</b>		<b>929</b>	<b>866</b>	<b>929</b>	<b>866</b>	<b>0</b>	<b>0</b>

The premium provision Non-Life amounted to kEUR 929 (2020: kEUR 866), which slightly increased.

### D.2.1.2 Claims provision

Basis for the calculation of the claims provision are the loss triangles (paid claims) which are built starting with the year 2002 (the year 2002 was chosen on a Group level in order to guarantee a consistent approach). The Best Estimate of the claims provision equals the probability weighted average of future payment for obligations from claims that have occurred. The method used for the calculation of claims provision is the chain-ladder approach. The completion of the triangle to a quadrangle is made by multiplication with settlement factors derived from historic claims data. The settlement factors are estimations for the expected increase of the claims in consecutive settlement years. Indexation is omitted (i.e. no inflation-adjusted claims triangles) due to the fact that the price index is already included in the payment pattern. These cash flows are discounted or shocked with the risk-free interest structure curves specified by EIOPA.

Claims provisions Non-Life		Gross Best Estimate		Net Best Estimate		Reinsurance Recoverables	
		2021	2020	2021	2020	2021	2020
LoB	Type of reinsurance	kEUR	kEUR	kEUR	kEUR	kEUR	kEUR
14x	Income protection reinsurance	1,540	1,503	1,540	1,503	0	0
19x	Fire and other damage to property reinsurance	1,039	984	1,039	984	0	0
20x	General liability reinsurance	2,843	3,979	2,843	3,979	0	0
<b>Total Non-Life</b>		<b>5,422</b>	<b>6,466</b>	<b>5,422</b>	<b>6,466</b>	<b>0</b>	<b>0</b>

The claims provision amounted to kEUR 5,422 (2020: kEUR 6,466) as of 31 December 2021. The decrease mainly results from a lower share on claims on a cedent within LoB 20x.

### D.2.1.3 Value of the technical provisions according to LOBs

The technical provisions under Solvency II are derived as the sum of the Best Estimate (consisting of the claims provision and the premium provisions) and the risk margin.

Technical Provisions Non-Life		Best Estimate (gross = net)		Risk Margin		Technical Provision	
		2021	2020	2021	2020	2021	2020
LoB	Type of reinsurance	kEUR	kEUR	kEUR	kEUR	kEUR	kEUR
14x	Income protection reinsurance	1,863	1,810	183	172	2,046	1,982
19x	Fire and other damage to property reinsurance	1,503	1,400	378	302	1,881	1,702
20x	General liability reinsurance	2,985	4,122	408	670	3,393	4,793
<b>Total Non-Life</b>		<b>6,351</b>	<b>7,332</b>	<b>969</b>	<b>1,145</b>	<b>7,320</b>	<b>8,477</b>

### D.2.2 Life

To calculate the Best Estimate life three different types of life reinsurance treaties are to be considered, each with a different method of calculation for the technical provision.

**Reinsurance on normal basis:** In this case GRAWE RE has the same liabilities as the cedant including optional liabilities stemming from savings premiums. Currently GRAWE Ukraine (reinsurance of endowment insurance) is reinsured on normal basis. The endowment insurance of GRAWE Ukraine is the only portfolio which does not only pay in case of death but also in case of maturity and which offers profit participation. However, this portfolio is not open to new business and is continuously decreasing.

**Reinsurance on risk basis:** Reinsurance only covers mortality risk and the contract term is only one year. The cash inflows (risk premium) and the cash outflows (benefit payments) are therefor also limited to one year, which facilitates the Best Estimate calculation.

**Reinsurance for tariff 'PZV':** This is an Austrian pension product ("Prämiengeförderte Zukunfts-Vorsorge") with tax relief by the government. It is defined as an index-linked tariff with connected capital guarantees.

### D.2.2.1 Value of the technical provisions according to LOBs

The technical provisions under Solvency II comprise of a Best Estimate and a risk margin.

Technical Provisions Life		Gross Best Estimate		Risk Margin		Technical Provisions	
		2021	2020	2021	2020	2021	2020
LoB	Type of reinsurance	kEUR	kEUR	kEUR	kEUR	kEUR	kEUR
36	Insurance with profit participation on accepted reinsurance	8,144	8,254	15	28	8,159	8,282
36	Other life insurance on accepted reinsurance	-3,618	-3,517	1	1	-3,617	-3,516
<b>Total Life</b>		<b>4,526</b>	<b>4,737</b>	<b>16</b>	<b>29</b>	<b>4,542</b>	<b>4,766</b>

As mentioned above with regard to the business reinsured on normal basis, not only single risks are reinsured but according to the reinsurance share (percentage) premiums and benefits of the portfolio of the cedants are shared.

For the contract portfolio on normal basis separate calculations are performed and the result according to the accepted reinsurance share is considered as reinsurance portfolio. Basis for the Best Estimate calculations are the original contractual cash flows (premiums, benefits, profit participation, etc.) of the cedants.

For risk premium business there is a simplified calculation because the contract term is only one year and reinsurance covers only mortality risk. The cash flows can be shortened to one year and both, cash inflow (risk premium) and cash outflows, can easily be shocked and compared.

The market value for PZV is calculated based on an option pricing method similar to a Black-Scholes-Merton approach to value the capital guarantee embedded. As the relevant reinsurance contracts are one-year-contracts (contract boundary), the considered time period in the calculation for the Best Estimate of PZV for GRAWE RE is always the subsequent year.

### D.2.3 Description of the amounts that can be collected from retrocession contracts (reinsurance recoverables)

The reinsurance recoverables result as the difference between the gross and the net result for the Best Estimate Life and Non-Life. In GRAWE RE, gross results equal net result.

## **D.2.4 Description of the uncertainty level**

### **D.2.4.1 Non-Life**

For the claims provision confidence intervals are calculated where appropriate. The idea is to be able to statistically assess the fluctuation. The confidence intervals show a possible range with different safety levels for the Best Estimate.

### **D.2.4.2 Life**

Within GRAWE RE, there are three different types of life reinsurance treaties, each with a different method of calculation of the technical provision.

Regarding business reinsured on normal basis calculations are performed using the calculation program SecProfitPlus. The calculation program SecProfitPlus is separated into two parts, the deterministic part to deal with the guaranteed cash flows and the stochastic part to simulate the future discretionary benefits of the ceding company. Business reinsured on normal basis may include the payment of bonuses as declared by the ceding company. As the amount of these payments is not at the discretion of GRAWE RE, they do not form part of the future discretionary benefit (FDB) of GRAWE RE itself but are added to the deterministic part. The deterministic calculation is based on the book value of cash flows, it applies the parameter of second order and discounts the weighted cash flows to the balance sheet reference date. The calculation bases of second order are obtained with statistical methods. In the description of the degree of uncertainty, a differentiation is to be made between the two components in deterministic and simulated form.

In the deterministic part the Best Estimate is calculated from the following three main parameters:

1. Contractual cash flow,
2. Probability,
3. Discount factor.

While the contractual cash flows are determined by the nature of the contractual terms and the discount rate is by definition determined by a fixed specification, the uncertainty is influenced exclusively by the calculation bases of second order. In this way, the deterministic Best Estimate depends on the uncertainty of the calculation bases of second order.

Regarding business reinsured on risk premium basis and reinsurance for tariff 'PZV' the level of uncertainty is regarded immaterial due to the fact that the relevant reinsurance contracts are one-year-contracts (contract boundary).

## **D.2.5 Qualitative and quantitative explanation of the valuation differences per LOB, differences in the basics, methods and assumptions used**

The most fundamental differences to the book values that are shown in the following table result from the market-consistent evaluation of the Solvency II reserves pursuant to the principles of orderly accounting (= book value according to IFRS) and according to the fair value principle (= market value).

Technical Liabilities	Economic Balance Sheet		Financial Statements IFRS		Deferred Liability Tax Rate 12.5%	
	2021	2020	2021	2020	2021	2020
	kEUR	kEUR	kEUR	kEUR	kEUR	kEUR
Risk margin (NL excl. Health)	786	972	1,155	1,079	46	13
Best Estimate (NL excl. Health)	4,488	5,523	6,595	6,128	263	76
Best estimate Life	4,526	4,737	48,968	46,369	5,555	5,204
Risk margin Life	16	29	173	282	20	32
Risk margin (NL health)	183	172	301	277	15	13
Best Estimate (NL health)	1,863	1,810	3,060	2,913	150	138
<b>Total</b>	<b>11,862</b>	<b>13,243</b>	<b>60,252</b>	<b>57,048</b>	<b>6,049</b>	<b>5,476</b>

The valuation is done according to the hierarchy of the Regulation (EU) No. 1126/2008 pursuant to the fair value principle. Differences in the valuation and in the results are based on fundamentally different assumptions between the book value according to IFRS and the economic value.

The fundamental differences are listed in the table below:

	IFRS	Solvency II
<b>Addressees</b>	creditor protection	supervisory authority, other insurance undertakings, rating agencies, customers
<b>In general</b>	use of relevant IFRS and IAS to value at fair value	market-consistent valuation
	standards based assumptions	realistic assumption
	creation of hidden reserves where permitted by IAS	disclosure of hidden reserves
	accounting and valuation options as per appropriate IFRS and IAS	defined in guidelines and technical specifications
	according to IAS 39 Financial Instruments measurement and recognition	fair value and time value
	no counterparty default	probability of the counterparty default is considered
	behaviour of the counterparty is not considered	behaviour of the counterparty is considered
	no preview on the economic development	economic development is anticipated
	future management actions are applied once	future management actions are adapted gradually to the simulation path
<b>Claims Reserves</b>	valuation of the payments to the counterparty according to reasonable commercial assessment and in accordance with IFRS 4	market-consistent valuation

	principle of prudence and case-by-case assessment and in accordance with IFRS 4	principle of expected value and actuarial calculation of the final result of claims
	net view in self retention and in accordance with IFRS 4	gross view without deduction of reinsurance recoverable and net view after reinsurance
	discounting with the actuarial interest rate and in accordance with IFRS 4	discounting with the risk-free interest rate
<b>Life Reserves</b>	actuarially calculated value of the obligations including declared and allocated profit shares and in accordance with IFRS 4	all probability weighted cash flows including future surplus participation
	use of an actuarial interest rate taking into account the maximum interest rate regulation and in accordance with IFRS 4	use of an interest rate curve with upward and downward shocks published by EIOPA

### D.2.5.1 Relevant changes in the assumptions for the calculation of technical reserves

Throughout the year 2021, the calculation software SecProfitPlus was revised by the cedant. The most important changes compared to the previous year in the calculation program SePP were:

- Single Bond Simulation
- Improvement in the consideration of management fees

Following changes in the cedant's assumptions of the valuation have been adapted:

- Annual update of cedant's mortality rates of second order;
- Annual update of cedant's expense factors;
- Annual update of cedant's lapse and waiver of premium probabilities.
- Increase of data granularity and data quality adjustment in determining expense factors.

As for the calculation of claims provision, the run-off triangles were moved forward by one year and start with accident year 2001 as per 31 December 2021.

### D.2.5.2 Calculation bases of the second order

The fundamental drivers for the difference between book value and market value in life reinsurance are the calculation bases of second order. Calculation bases of first order are those calculation bases that are determined in a very cautious way as they are used for example for the valuation of cover funds.

In contrast to those cautiously selected calculation bases first order, the more realistic calculation bases are described as calculation bases of second order. These relate to the following parameters:

- Risk-free interest curve
- Cancellation probability
- Premium exemption probability
- Mortality



- Costs.

The risk-free interest curve (without volatility adjustment) specified by EIOPA and relevant for the balance sheet reference data is applied. This has a big impact especially for technical provisions in Life. Further calculation bases are derived from company internal data.

#### **D.2.5.3 Description matching adjustment and portfolio**

Due to the high solvency ratio, the use of a LTG measure was not considered.

#### **D.2.5.4 Statement on the use of the volatility adjustment**

Due to the high solvency ratio, the use of the volatility adjustment was not considered.

#### **D.2.5.5 Statement on the use of the risk-free transfer interest rate**

Due to the high solvency ratio, the use of a risk-free transfer interest rate was not considered.

### **D.2.6 Significant simplifications and description of the level of uncertainty in calculating the technical provisions**

The technical provisions were calculated pursuant to the regulations for technical provisions (Articles 76 to 86 of the Solvency II Directive 2009/138/EC). Regarding business reinsured on normal basis the behaviour of the policy holders is taken into consideration in the form of lapse and premium exemption probabilities according to calculation bases of second order of the ceding companies.

#### **D.2.7 Calculation of the risk margin**

In addition to the Best Estimate, the technical provisions also include the risk margin. The calculation of the risk margin is done in accordance with the standard model via the cost-of-capital (CoC) approach. The consideration of this approach is that the total portfolio is transferred to a reference company that invests without risk and handles this portfolio. The costs for holding solvency capital for risks that exist despite risk-free investment are depicted by the risk margin.

The cost of capital rate specified in the Solvency II standard model is 6%. Besides the underwriting risk, also the unavoidable market risk, the credit risk as well as the operational risk have to be included in the calculation.

The used method corresponds regarding the content to simplification no. 1 of EIOPA guidelines for the assessment of technical provisions (EIOPA-BoS-14/166 DE).

## **D.3 Other liabilities**

### **D.3.1 Explanation of the valuation differences per category of liability**

#### **D.3.1.1 Provisions other than technical provisions**

In IAS 37.36, the IFRS standardises the consideration of the provisions with the most probable value or with the expected value pursuant to IAS 37.39. From the current perspective, no fundamental deviations to the book value according to IFRS result in this position; therefore, the approach in the annual financial statements according to IFRS corresponds to the valuation approach in the economic balance sheet.

#### **D.3.1.2 Deferred tax liabilities**

The deferred tax liabilities are indicated under the item "Deferred tax liabilities" of the liabilities in the economic balance sheet. There is no netting with the posted deferred tax assets in the economic balance sheet. The tax rate used is again 12.5% and the amount reported is kEUR 6,049 and is derived from the differences in liabilities between the economic balance sheet values and the annual financial statements under IFRS values as shown in the table used in section D.2.5.

#### **D.3.1.3 Payables (trade, not insurance)**

Other liabilities are valued with the repayment amount. There are no differences between the approach of the economic balance sheet and the book value in the annual financial statements according to IFRS.

#### **D.3.1.4 Reinsurance payables**

Reinsurance payables are the liabilities to be settled and resulting from the invoicing for the reinsurance ceded.

An offsetting with receivables is only to be done if this offsetting is legally permissible on the reference date for the invoicing; an offsetting with custodian account receivables is, however, not permitted under any circumstances.

There are no differences between the approach of the economic balance sheet and the book value in the annual financial statements according to IFRS.

#### **D.3.1.5 Payables (trade, not insurance)**

The item "Payables (trade, not insurance)" includes mainly taxes for Value Added Tax and employee payroll and defence tax and some employee bonus and the total amount as at 31 December 2021 is kEUR 113. The book value in the annual financial statements according to IFRS thus corresponds to the value of the economic balance sheet.

### **D.3.1.6 Insurance payables**

Insurance payables are the liabilities to be settled and resulting from the invoicing of the reinsurance submitted from cedants.

An offsetting with receivables is only to be done if this offsetting is legally permissible on the reference date for the invoicing; an offsetting with custodian account receivables is, however, not permitted under any circumstances.

## **D.3.2 Assessments that can fundamentally influence the valuation approaches**

### **D.3.2.1 Deferred taxes**

The risk-mitigating effect of deferred taxes (ability of deferred taxes to compensate for losses [Adj<sub>DT</sub>]) in the economic balance sheet is based on deferred tax liabilities possibly being reduced or deferred taxed assets being increased in the event of loss.

Pursuant to Art. 207 Par. 1 of the Delegated Regulation, the ability of the deferred taxes to compensate for losses corresponds to the total from the basic capital requirement (BSCR), the adjustment of the ability to compensate for losses through the technical provisions (Adj<sub>TP</sub>) and the capital requirement for the operational risk, multiplied with the individual corporate tax rate.

The amount of the ability of deferred taxes to compensate for losses is limited to the lower value of the amount determined pursuant to Art. 207 and/or the amount of the netted deferred tax liabilities indicated in the economic balance sheet and is taken into account as a deduction item from the SCR. Further explanations are made in section D.1.2.2.

## **D.4 Alternative methods of valuation**

Pursuant to Art. 9 Par. 4 of the Delegated Regulation (EU) 2015/35, the use of deviating methods for valuation is permissible if the methods used

- (1) are also applied within the framework of the creation of the annual financial statements or of the consolidated statements,
- (2) the valuation method complies with Article 75 of the Solvency II Directive,
- (3) the company does not value this asset or this liability according to IFRS,
- (4) an valuation of the assets and liabilities pursuant to IFRS entails costs for the company that based on its administrative costs would be disproportionate overall.

GRAWE RE only uses alternative price determination in an immaterial extent (for subsidiary companies like in Flutrana Entreprises Limited) in order to determine the valuation approach in the economic balance sheet. The costs to make a more up to date evaluation from using the financial statements of the previous year as simply more than the actual effect it will have in the overall results.

In the following areas, GRAWE RE uses alternative valuation methods to determine the valuation approach in the economic balance sheet:

### **D.4.1 Alternative price determination for securities**

The market price for securities for which no market price of a liquid market is available is determined via the risk-free interest curve and a supplement. The following hierarchy is complied with to determine the supplement:

- a) use of a liquid security of the same debtor of the same credit rating,
- b) use of credit default swaps,
- c) determination of credit supplements at banks who carry out primary issues for various issuers (of varying credit ratings),
- d) determination of a credit spread for equivalent securities.

The valuation hierarchy of financial assets is explained in section D.1.2.1.

Private placements are regularly checked for liquidity and value of the prices and if there is illiquidity priced with alternative valuation methods.

### **D.4.2 At-equity approach for shares in affiliated companies and participations**

The fair values of holdings in related undertakings and participations are determined pursuant to Article 13 Par. 1 letter b) with the adjusted equity method as of the balance sheet reference date and/or correspond to the book value pursuant to Article 13 Par. 6.

Any changes in the own funds of the participating subsidiaries, i.e. their profits and/or losses thus have a direct effect on the fair value of the participation.

## **D.5 Other information**

### **D.5.1 Currency conversion**

Assets, reserves and liabilities in foreign currency will be converted into Euro at the ECB reference rate as of the balance sheet date.

### **D.5.2 Materiality**

The principle of proportionality and materiality is implemented pursuant to Art. 9 Par. 4 of the Delegated Regulation (EU) 2015/35 in accordance with the nature, scope and complexity of the company.

With regard to the determination of the materiality threshold in the valuation of the assets and liabilities in the economic balance sheet, reference is made to the definition of the IAS 8.5.

## E. CAPITAL MANAGEMENT

### E.1 Own funds

Under Solvency II, the own funds requirement of an insurance company is oriented to the latter's actual risk profile (cf. statements in section C). The higher the risks that an insurance company is exposed to, the higher the solvency capital requirement (SCR) or the minimum capital requirement (MCR) that the company has to cover with creditable own funds.

The determination of the own funds that can be taken into consideration to cover SCR and MCR is based on a three-phase procedure:

In a first step, the own funds in the economic balance sheet are calculated as the surplus of the assets over the liabilities. This surplus is indicated in the depiction of the economic balance sheet in section D. The economic valuation of the assets and liabilities, however, deviates from the valuation according to existing IFRS accounting regulations (cf. statements in section D). The own funds indicated in the economic balance sheet are described as basic own funds.

The basic own funds can also include so-called subordinated liabilities. The capital management guidelines of GRAWE RE currently do not make provision for the issue of such liabilities.

Supplementary own funds can be requested from the shareholders to compensate for losses, but are not included in the economic balance sheet and may only be taken into account after approval from the financial market supervisory authority. The taking out of supplementary own funds is not envisaged in the valid capital management guideline of GRAWE RE.

In a second step, the own funds components are allocated to three categories ("Tiers") as these can compensate for losses in varying degrees in accordance with their availability and term.

In its economic balance sheet, GRAWE RE only indicates own funds components that have an indefinite term, are free of encumbrances and are permanently available and thus can be classified as Tier 1 capital.

Finally, if applicable, there will be a limitation of the offset ability of Tier 1, Tier 2 and Tier 3 capital as individual own funds components do not have full ability to compensate for losses in an emergency.

In the company-internal capital management guideline, GRAWE RE has formulated the goal of only holding basic own funds of Tier 1 quality.

In order to achieve this goal, in particular the following rules are to be complied with in the case of corporate actions:

- Only ordinary shares may be issued. In the process, the statutory provisions valid for the share issue are to be complied with.
- It is to be ensured that all own funds components are fully paid up at all times or are covered by assets with value.

- It is to be ensured that the own funds components are not encumbered by the existence of agreements or associated transactions or as the result of a group structure via which the effectiveness as capital is undermined.
- Neither subordinated liabilities may be used.
- No treasury stock may be held.

No corporate actions are planned for the financial years until 2022.

The annual general meeting of GRAWE RE is responsible for the decision taking regarding dividend payments. The Board of Directors has to submit to the annual general meeting a proposal for the dividend payment. For the year 2021 a dividend payment of kEUR 5,000 will be proposed.

The proposal is to be developed with regard to commercial and strategic interests of all stakeholders (in particular but not solely of the shareholders) but must at any rate take into account the following aspects:

- the statutory provisions, in particular the provisions under company law and supervisory law regarding the dividend payments;
- the resourcing at any time of the company with sufficient own funds to meet the capital requirements as of 31 December of the last financial year;
- key business events since 31 December of the last financial year for which a negative influence on the own funds and the fulfilment of the capital requirements is expected;
- the detailed planning for the ongoing financial year and the resulting forecast of the own funds and of the capital requirements;
- the medium-term capital management plan and the resulting forecast of the own funds and of the capital requirements.

With the proposal to the general shareholders' meeting, the Board of Directors has to ensure that as a result of the dividend payment neither the current nor the forecasted solvency ratio falls below 150%.

### **E.1.1. Own funds according to IFRS**

The paid-up capital of GRAWE RE consists as of 31 December 2021 of 10,001,000 units of shares with a nominal value of 1.00 EUR each. The company does not hold any treasury stock at all.

### **E.1.2. Own funds pursuant to Solvency II**

The own funds resulting from the economic balance sheet as of 31 December 2021 are comprised of the positions depicted in the overview listed below.

GRAWE RE does not have any subordinated liabilities or any supplementary own funds.

The total own funds therefore correspond to the total of the basic own funds.

Based on these characteristics, the basic own funds of GRAWE RE are to be classified solely as "Tier 1" pursuant to Art. 69 to Art. 71 of the Delegated Regulation. They can be offset in an unlimited amount to cover SCR and MCR.

	<b>Total 2021 kEUR</b>	<b>of which Tier 1 unlimited kEUR</b>	<b>Total 2020 kEUR</b>	<b>of which Tier 1 unlimited kEUR</b>
Paid-up share capital	10,001	10,001	10,001	10,001
Capital reserves	280	280	280	280
Reconciliation reserve	231,195	231,195	211,125	211,125
<b>Total of the basic own funds</b>	<b>241,476</b>	<b>241,476</b>	<b>221,406</b>	<b>221,406</b>

The reconciliation reserve corresponds to the total surplus of the assets over the liabilities less the items named in Art. 70 Par. 1 of the Delegated Regulation. In the past financial year, no dividend payment was agreed.

The reconciliation reserve of GRAWE RE is therefore calculated as follows:

	<b>Total 2021 kEUR</b>	<b>Total 2020 kEUR</b>
<b>Surplus of the assets over the liabilities</b>	<b>241,476</b>	<b>221,406</b>
Paid-up share capital	10,001	10,001
Capital reserves	280	280
<b>Other basic own funds</b>	<b>-10,281</b>	<b>-10,281</b>
<b>Reconciliation reserve</b>	<b>231,195</b>	<b>211,125</b>

### **E.1.3. Explanation of the differences in valuation**

The differences in valuation between the own funds of the economic balance sheet and the own funds according to IFRS are comprised of the following positions:

	<b>Difference in valuation</b>	
	<b>2021</b>	<b>2020</b>
	kEUR	kEUR
Difference in the valuation of assets	108,532	99,393
less: difference in the valuation of technical provisions	48,389	43,805
less: difference in the valuation of other liabilities	-6,049	-5,476
Total amount of the reserves from the annual financial statements	85,322	78,403
<hr/>		
<b>Reserves from the annual financial statements, adjusted to reflect the valuation differences from Solvency II</b>	<b>236,195</b>	<b>216,125</b>
<hr/>		
Surplus of the assets over the liabilities that can be assigned to the other basic own funds	10,281	10,281
<hr/>		
<b>Surplus of the assets over the liabilities</b>	<b>246,476</b>	<b>226,406</b>

The difference in the valuation of the assets results from the market values applied in the economic balance sheet exceeding overall the book values in the balance sheet according to IFRS.

With the technical provisions, the Best Estimate overall is substantially below the book values in the IFRS balance sheet.

The differences in the valuation of other liabilities results primarily from the carrying of deferred taxes as liabilities.

#### **E.1.4. Deferred Tax**

As at 31 December 2021 deferred tax assets (DTA) amount to kEUR 11 and deferred tax liabilities (DTL) are kEUR 6,049. The net deferred tax liabilities, which result from the difference between deferred tax assets and deferred tax liabilities, amount to kEUR -6,038. This value results primarily from Best Estimates Life and a small value comes from Best Estimates Non-Life.

Furthermore, no Tier 3 capital from net deferred tax assets is reported in GRAWE RE's own funds.

## **E.2 SCR and MCR**

GRAWE RE calculates the solvency capital requirement (SCR) with the Solvency II standard formula.

This is intended to reflect a capital need that makes it possible for the company to compensate for unforeseen losses in the next year. The SCR is calibrated in such a way that it corresponds



to a Value at Risk of the basic own funds at a confidence level of 99.5% over a period of one year or to put it another way, a "1-in-200"-year ruin event is simulated. The calibration guarantees that all quantifiable risks that an insurance company is exposed to are taken into consideration.

When applying the standard formula GRAWE RE does not use neither simplifications for individual modules nor sub-modules or company-specific parameters nor the matching adjustment. No use was made of the application of the volatility adjustment either.

As of 31 December 2021, the SCR of GRAWE RE was kEUR 42,503 (2020: kEUR 37,765) and, based on risk modules, is comprised as follows:

		2021	Share on SCR	2020	Share on SCR
<b>Market risk</b>	Interest rate risk	5,847	13.8%	6,073	16.1%
	Equity risk	34,199	80.5%	29,901	79.2%
	Property risk	0	0.0%	0	0.0%
	Spread risk	7,586	17.8%	7,050	18.7%
	Concentration risk	656	1.5%	772	2.0%
	Currency risk	2,958	7.0%	2,494	6.6%
	Diversification	-9,652	-22.7%	-9,448	-25.0%
	<b>TOTAL</b>	<b>41,594</b>	<b>97.9%</b>	<b>36,843</b>	<b>97.6%</b>
<b>Counterparty default risk</b>		<b>2,759</b>	<b>6.5%</b>	<b>2,582</b>	<b>6.8%</b>
<b>Life underwriting risk</b>	Mortality risk	77	0.2%	37	0.1%
	Longevity risk	1	0.0%	2	0.0%
	Disability risk	0	0.0%	1	0.0%
	Lapse risk	49	0.1%	112	0.3%
	Cost risk	23	0.1%	17	0.0%
	Revision risk	0	0.0%	0	0.0%
	Catastrophe risk	13	0.0%	12	0.0%
	Diversification	-54	-0.1%	-47	-0.1%
<b>TOTAL</b>	<b>109</b>	<b>0.3%</b>	<b>133</b>	<b>0.4%</b>	
<b>Health underwriting risk</b>	Health (similar to Life)	0	0.0%	0	0.0%
	Premium and reserve risk	1,075	2.5%	1,363	3.6%
	Lapse risk	0	0.0%	0	0.0%
	Health (similar to Non-Life)	1,075	2.5%	1,363	3.6%
	Catastrophe risk	150	0.4%	150	0.4%
	Diversification	-103	-0.2%	-105	-0.3%
<b>TOTAL</b>	<b>1,122</b>	<b>2.6%</b>	<b>1,408</b>	<b>3.7%</b>	
<b>Non-Life underwriting risk</b>	Premium and reserve risk	1,930	4.5%	2,605	6.9%
	Lapse risk	0	0.0%	0	0.0%
	Natural catastrophes	4,584	10.8%	3,758	10.0%
	Man-made catastrophes	4,518	10.6%	3,380	8.9%
	Other catastrophes	0	0.0%	0	0.0%
	Catastrophe risk	6,436	15.1%	5,054	13.4%
	Diversification	-1,200	-2.8%	-1,421	-3.8%
<b>TOTAL</b>	<b>7,167</b>	<b>16.9%</b>	<b>6,238</b>	<b>16.5%</b>	
<b>Basic SCR (BSCR)</b>		<b>45,209</b>	<b>106.4%</b>	<b>40,175</b>	<b>106.4%</b>
<b>Operational risk</b>		<b>504</b>	<b>1.2%</b>	<b>590</b>	<b>1.6%</b>
Adjustments technical provisions (Adj <sub>TP</sub> )		0	0.0%	0	0.0%
Adjustments deferred taxes (Adj <sub>DT</sub> )		-3,210	-7.6%	-3,000	-7.9%
<b>Adjustments (Adjustment term)</b>		<b>-3,210</b>	<b>-7.6%</b>	<b>-3,000</b>	<b>-7.9%</b>
<b>SCR (capital requirement)</b>		<b>42,503</b>	<b>100.0%</b>	<b>37,765</b>	<b>100.0%</b>

The ratio of the eligible own funds to the SCR (solvency ratio) was 568.1% (2020: 586.3%) as of the reporting reference date. The own funds were sufficiently fulfilled in the whole reporting period.

The **minimum capital requirement (MCR)** constitutes the minimum volume of capital that the insurance company must hold at any time in order to be able to continue its business activities further.

The MCR is calculated in a three-stage procedure in accordance with the Solvency II calculation regulations:

The linear MCR is determined as a function of the net Best Estimate, the net written premiums and the risk capital for the unit-linked and index-linked life insurance that are to be multiplied with specified factors.

For the linear MCR calculated in Step 1, it is checked whether it is between 25% and 45% of the SCR. If this is the case, the linear MCR is then used further for the third step of the calculations.

If, however, the linear MCR is below 25%, 25% of the SCR will then be applied in Step 3. If it is over 45%, 45% of the SCR will then be included in the calculations of Step 3.

It is checked whether the value from Step 2 has an absolute lower threshold stipulated by law. If this is the case, then the result from step 2 corresponds to the MCR. If the calculation result from step 2 results in a lower value than the absolute lower threshold, the MCR will be increased to this lower threshold.

The MCR of GRAWE RE corresponds to 25% of the SCR (MCR floor). As of the reporting reference date 31 December 2021, the MCR of GRAWE RE was kEUR 10,626 (2020: kEUR 9,441).

The ratio of the eligible own funds to the MCR amounted to 2273% (2020: 2345%).

### **Adjustment Term Deferred Taxes**

In GRAWE RE the adjustment term deferred taxes amounts to kEUR -3,210. As pointed out in section E.1.4. GRAWE RE has an available net deferred tax liability of kEUR -6,038. However, the adjustment term is calculated based on (BSCR +SCRop + AdjTP) times the Tax Rate as this results in a lower adjustment term.

Currently the SCR is subject to supervisory assessment.

## **E.3 Use of the duration-based equity-risk sub-module in the calculation of the Solvency Capital Requirement**

Not relevant.

#### **E.4 Differences between the standard formula and any internal models used**

Not relevant.

#### **E.5 Non-compliance with the Minimum Capital Requirement and non-compliance with the Solvency Capital Requirement**

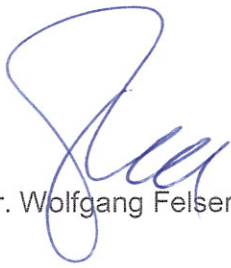
Not relevant.

#### **E.6 Any other information**

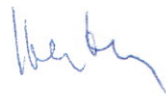
Any relevant information was mentioned in the previous sections.

Nicosia, 6 April 2022

**The Board of Directors**



Dr. Wolfgang Felser



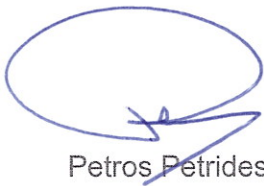
Dr. Thomas Hlatky




Daniela Uhlmann, MA



Aristodemos Aristodemou, BA, FCCA



Petros Petrides, BSC FCA



Christos Michael, MA FCCA

# Annex

## Annex I

### S.02.01.02

#### Balance sheet

	Solvency II value	
		C0010
<b>Assets</b>		
Intangible assets	<b>R0030</b>	
Deferred tax assets	<b>R0040</b>	10,853
Pension benefit surplus	<b>R0050</b>	
Property, plant & equipment held for own use	<b>R0060</b>	1,033
Investments (other than assets held for index-linked and unit-linked contracts)	<b>R0070</b>	251,225,188
Property (other than for own use)	<b>R0080</b>	
Holdings in related undertakings, including participations	<b>R0090</b>	121,419,387
Equities	<b>R0100</b>	4,141
Equities - listed	<b>R0110</b>	4,141
Equities - unlisted	<b>R0120</b>	
Bonds	<b>R0130</b>	68,244,646
Government Bonds	<b>R0140</b>	25,339,784
Corporate Bonds	<b>R0150</b>	41,251,531
Structured notes	<b>R0160</b>	1,653,331
Collateralised securities	<b>R0170</b>	
Collective Investments Undertakings	<b>R0180</b>	61,557,013
Derivatives	<b>R0190</b>	
Deposits other than cash equivalents	<b>R0200</b>	
Other investments	<b>R0210</b>	
Assets held for index-linked and unit-linked contracts	<b>R0220</b>	
Loans and mortgages	<b>R0230</b>	
Loans on policies	<b>R0240</b>	
Loans and mortgages to individuals	<b>R0250</b>	
Other loans and mortgages	<b>R0260</b>	
Reinsurance recoverables from:	<b>R0270</b>	0
Non-life and health similar to non-life	<b>R0280</b>	0
Non-life excluding health	<b>R0290</b>	0
Health similar to non-life	<b>R0300</b>	0
Life and health similar to life, excluding health and index-linked and unit-linked	<b>R0310</b>	0
Health similar to life	<b>R0320</b>	
Life excluding health and index-linked and unit-linked	<b>R0330</b>	0
Life index-linked and unit-linked	<b>R0340</b>	
Deposits to cedants	<b>R0350</b>	
Insurance and intermediaries receivables	<b>R0360</b>	5,082,548
Reinsurance receivables	<b>R0370</b>	
Receivables (trade, not insurance)	<b>R0380</b>	7,568,539
Own shares (held directly)	<b>R0390</b>	
Amounts due in respect of own fund items or initial fund called up but not yet paid in	<b>R0400</b>	
Cash and cash equivalents	<b>R0410</b>	888,014
Any other assets, not elsewhere shown	<b>R0420</b>	5,895
<b>Total assets</b>	<b>R0500</b>	264,782,070

	<b>Solvency II value</b>
	<b>C0010</b>
<b>Liabilities</b>	
Technical provisions – non-life	<b>R0510</b> 7,319,790
Technical provisions – non-life (excluding health)	<b>R0520</b> 5,273,948
Technical provisions calculated as a whole	<b>R0530</b>
Best Estimate	<b>R0540</b> 4,487,801
Risk margin	<b>R0550</b> 786,146
Technical provisions - health (similar to non-life)	<b>R0560</b> 2,045,843
Technical provisions calculated as a whole	<b>R0570</b>
Best Estimate	<b>R0580</b> 1,863,139
Risk margin	<b>R0590</b> 182,704
Technical provisions - life (excluding index-linked and unit-linked)	<b>R0600</b> 4,542,719
Technical provisions - health (similar to life)	<b>R0610</b>
Technical provisions calculated as a whole	<b>R0620</b>
Best Estimate	<b>R0630</b>
Risk margin	<b>R0640</b>
Technical provisions – life (excluding health and index-linked and unit-linked)	<b>R0650</b> 4,542,719
Technical provisions calculated as a whole	<b>R0660</b>
Best Estimate	<b>R0670</b> 4,526,225
Risk margin	<b>R0680</b> 16,494
Technical provisions – index-linked and unit-linked	<b>R0690</b>
Technical provisions calculated as a whole	<b>R0700</b>
Best Estimate	<b>R0710</b>
Risk margin	<b>R0720</b>
Contingent liabilities	<b>R0740</b>
Provisions other than technical provisions	<b>R0750</b> 46,700
Pension benefit obligations	<b>R0760</b>
Deposits from reinsurers	<b>R0770</b>
Deferred tax liabilities	<b>R0780</b> 6,048,630
Derivatives	<b>R0790</b>
Debts owed to credit institutions	<b>R0800</b>
Financial liabilities other than debts owed to credit institutions	<b>R0810</b>
Insurance & intermediaries payables	<b>R0820</b> 223,016
Reinsurance payables	<b>R0830</b> 12,116
Payables (trade, not insurance)	<b>R0840</b> 112,998
Subordinated liabilities	<b>R0850</b>
Subordinated liabilities not in Basic Own Funds	<b>R0860</b>
Subordinated liabilities in Basic Own Funds	<b>R0870</b>
Any other liabilities, not elsewhere shown	<b>R0880</b> 0
<b>Total liabilities</b>	<b>R0900</b> 18,305,970
<b>Excess of assets over liabilities</b>	<b>R1000</b> 246,476,100

Annex I

S.05.01.02

Premiums, claims and expenses by line of business

	Line of Business for: non-life insurance and reinsurance obligations (direct business and accepted proportional reinsurance)												Line of Business for: accepted non-proportional reinsurance				Total	
	Medical expense insurance	Income protection insurance	Workers' compensation insurance	Motor vehicle liability insurance	Other motor insurance	Marine, aviation and transport insurance	Fire and other damage to property insurance	General liability insurance	Credit and suretyship insurance	Legal expenses insurance	Assistance	Miscellaneous financial loss	Health	Casualty	Marine, aviation, transport	Property		
	C0010	C0020	C0030	C0040	C0050	C0060	C0070	C0080	C0090	C0100	C0110	C0120	C0130	C0140	C0150	C0160		C0200
<b>Premiums written</b>																		
Gross - Direct Business	R0110																	
Gross - Proportional reinsurance accepted	R0120		2,327,111					3,833,134	1,296,835									7,457,080
Gross - Non-proportional reinsurance accepted	R0130																	
Reinsurers' share	R0140		12,116															12,116
Net	R0200		2,314,995					3,833,134	1,296,835									7,444,964
<b>Premiums earned</b>																		
Gross - Direct Business	R0210																	
Gross - Proportional reinsurance accepted	R0220		2,331,138					3,743,922	1,289,186									7,364,246
Gross - Non-proportional reinsurance accepted	R0230																	
Reinsurers' share	R0240		12,116															12,116
Net	R0300		2,319,022					3,743,922	1,289,186									7,352,130
<b>Claims incurred</b>																		
Gross - Direct Business	R0310																	
Gross - Proportional reinsurance accepted	R0320		984,483					1,979,833	429,674									3,393,990
Gross - Non-proportional reinsurance accepted	R0330																	
Reinsurers' share	R0340																	
Net	R0400		984,483					1,979,833	429,674									3,393,990
<b>Changes in other technical provisions</b>																		
Gross - Direct Business	R0410	-	-	-	-	-	-	-	-	-	-	-	-	-	-	-	-	
Gross - Proportional reinsurance accepted	R0420	-	-	-	-	-	-	-	-	-	-	-	-	-	-	-	-	
Gross - Non-proportional reinsurance accepted	R0430																	
Reinsurers' share	R0440	-	-	-	-	-	-	-	-	-	-	-	-	-	-	-	-	
Net	R0500	-	-	-	-	-	-	-	-	-	-	-	-	-	-	-	-	
<b>Expenses incurred</b>	R0550		1,158,488					1,842,093	692,337									3,692,918
<b>Other expenses</b>	R1200																	
<b>Total expenses</b>	R1300																	3,692,918

		Line of Business for: <b>life insurance obligations</b>					<b>Life reinsurance obligations</b>		Total	
		Health insurance	Insurance with profit participation	Index-linked and unit-linked insurance	Other life insurance	Annuities stemming from non-life insurance contracts and relating to health insurance obligations	Annuities stemming from non-life insurance contracts and relating to insurance obligations other than health insurance obligations	Health reinsurance	Life reinsurance	
		<b>C0210</b>	<b>C0220</b>	<b>C0230</b>	<b>C0240</b>	<b>C0250</b>	<b>C0260</b>	<b>C0270</b>	<b>C0280</b>	<b>C0300</b>
<b>Premiums written</b>										
Gross	<b>R1410</b>								7,241,737	7,241,737
Reinsurers' share	<b>R1420</b>									
Net	<b>R1500</b>								7,241,737	7,241,737
<b>Premiums earned</b>										
Gross	<b>R1510</b>								7,065,142	7,065,142
Reinsurers' share	<b>R1520</b>									
Net	<b>R1600</b>								7,065,142	7,065,142
<b>Claims incurred</b>										
Gross	<b>R1610</b>								1,691,908	1,691,908
Reinsurers' share	<b>R1620</b>									
Net	<b>R1700</b>								1,691,908	1,691,908
<b>Changes in other technical provisions</b>										
Gross	<b>R1710</b>								-1,320,744	-1,320,744
Reinsurers' share	<b>R1720</b>									
Net	<b>R1800</b>								-1,320,744	-1,320,744
<b>Expenses incurred</b>	<b>R1900</b>								1,014,300	1,014,300
<b>Other expenses</b>	<b>R2500</b>									
<b>Total expenses</b>	<b>R2600</b>									1,014,300



Annex I

S.05.02.01

Premiums, claims and expenses by country

		Home Country	Top 5 countries (by amount of gross premiums written) - non-life obligations				Total Top 5 and home country
		C0010	C0020	C0030	C0040	C0050	C0070
	<b>R0010</b>	<del>C0010</del>	AT	HR	SI	BA	<del>C0070</del>
		<b>C0080</b>	<b>C0090</b>	<b>C0090</b>	<b>C0090</b>	<b>C0090</b>	<b>C0140</b>
<b>Premiums written</b>							
Gross - Direct Business	<b>R0110</b>		-	-	-		-
Gross - Proportional reinsurance accepted	<b>R0120</b>		2,318,618	1,588,421	2,526,723	491,873	6,925,635
Gross - Non-proportional reinsurance accepted	<b>R0130</b>						
Reinsurers' share	<b>R0140</b>		12,116				12,116
Net	<b>R0200</b>		2,306,502	1,588,421	2,526,723	491,873	6,913,519
<b>Premiums earned</b>							
Gross - Direct Business	<b>R0210</b>						
Gross - Proportional reinsurance accepted	<b>R0220</b>		2,298,010	1,531,536	2,484,060	522,563	6,836,169
Gross - Non-proportional reinsurance accepted	<b>R0230</b>						
Reinsurers' share	<b>R0240</b>		12,116				12,116
Net	<b>R0300</b>		2,285,894	1,531,536	2,484,060	522,563	6,824,053
<b>Claims incurred</b>							
Gross - Direct Business	<b>R0310</b>						
Gross - Proportional reinsurance accepted	<b>R0320</b>		1,062,113	485,964	1,038,263	248,661	2,835,000
Gross - Non-proportional reinsurance accepted	<b>R0330</b>						
Reinsurers' share	<b>R0340</b>						
Net	<b>R0400</b>		1,062,113	485,964	1,038,263	248,661	2,835,000
<b>Changes in other technical provisions</b>							
Gross - Direct Business	<b>R0410</b>						
Gross - Proportional reinsurance accepted	<b>R0420</b>						
Gross - Non- proportional reinsurance accepted	<b>R0430</b>						
Reinsurers' share	<b>R0440</b>						
Net	<b>R0500</b>						
<b>Expenses incurred</b>	<b>R0550</b>		1,117,450	910,907	1,238,247	200,125	3,466,728
<b>Other expenses</b>	<b>R1200</b>	<del>C0010</del>	<del>C0020</del>	<del>C0030</del>	<del>C0040</del>	<del>C0050</del>	<del>C0070</del>
<b>Total expenses</b>	<b>R1300</b>						3,466,728

		Home Country	Top 5 countries (by amount of gross premiums written) - life obligations					Total Top 5 and home country
		C0150	C0160	C0170	C0180	C0190	C0200	C0210
	R1400		AT	BA	HU			
		C0220	C0230	C0240	C0250	C0260	C0270	C0280
<b>Premiums written</b>								
Gross	R1410		5,662,324	459,486	555,356			6,677,167
Reinsurers' share	R1420							
Net	R1500		5,662,324	459,486	555,356			6,677,167
<b>Premiums earned</b>								
Gross	R1510		5,492,805	452,554	555,262			6,500,621
Reinsurers' share	R1520							
Net	R1600		5,492,805	452,554	555,262			6,500,621
<b>Claims incurred</b>								
Gross	R1610		1,270,525	202,517	97,420			1,570,462
Reinsurers' share	R1620							
Net	R1700		1,270,525	202,517	97,420			1,570,462
<b>Changes in other technical provisions</b>								
Gross	R1710		(1,320,744)					-1,320,743
Reinsurers' share	R1720							
Net	R1800		(1,320,744)					-1,320,743
<b>Expenses incurred</b>	R1900		274,691	178,763	284,341			737,795
<b>Other expenses</b>	R2500							
<b>Total expenses</b>	R2600							737,795

Annex I

S.12.01.02

Life and Health SLT Technical Provisions

**Technical provisions calculated as a whole**  
 Total Recoverables from reinsurance/SPV and Finite Re after the adjustment for expected losses due to counterparty default associated to TP calculated as a whole

**Technical provisions calculated as a sum of BE and RM**  
**Best Estimate**  
**Gross Best Estimate**  
 Total Recoverables from reinsurance/SPV and Finite Re after the adjustment for expected losses due to counterparty default

**Risk Margin**  
 Best estimate minus recoverables from reinsurance/SPV and Finite Re - total

**Amount of the transitional on Technical Provisions**  
 Technical Provisions calculated as a whole  
 Best estimate  
 Risk margin

**Technical provisions - total**

Insurance with profit participation	Index-linked and unit-linked			Other life insurance			Annuities stemming from non-life insurance contracts and relating to insurance obligation other than health insurance obligations	Accepted reinsurance	Total (Life other than health insurance, incl. Unit-Linked)	Health insurance (direct			Annuities stemming from non-life insurance contracts and relating to health insurance	Health reinsurance (reinsurance accepted)	Total (Health similar to life insurance)
		Contracts without options and guarantees	Contracts with options or guarantees		Contracts without options and guarantees	Contracts with options or guarantees					Contracts without options and guarantees	Contracts with options or guarantees			
C0020	C0030	C0040	C0050	C0060	C0070	C0080	C0090	C0100	C0150	C0160	C0170	C0180	C0190	C0200	C0210
R0010															
R0020															
R0030								4,526,225	4,526,225						
R0080								-	-						
R0090								4,526,225	4,526,225						
R0100								16,494	16,494						
R0110															
R0120															
R0130															
R0200								4,542,719	4,542,719						

Annex I  
S.17.01.02  
Non-life Technical Provisions

	Direct business and accepted proportional reinsurance											Accepted non-proportional reinsurance				Total Non-Life obligation	
	Medical expense insurance	Income protection insurance	Workers' compensation insurance	Motor vehicle liability insurance	Other motor insurance	Marine, aviation and transport insurance	Fire and other damage to property insurance	General liability insurance	Credit and suretyship insurance	Legal expenses insurance	Assistance	Miscellaneous financial loss	Non-proportional health reinsurance	Non-proportional casualty reinsurance	Non-proportional marine, aviation and transport reinsurance		Non-proportional property reinsurance
	C0020	C0030	C0040	C0050	C0060	C0070	C0080	C0090	C0100	C0110	C0120	C0130	C0140	C0150	C0160	C0170	C0180
<b>Technical provisions calculated as a whole</b>	R0010																
Total Recoverables from reinsurance/SPV and Finite Re after the adjustment for expected losses due to counterparty default associated to TP calculated as a whole	R0050																
<b>Technical provisions calculated as a sum of BE and RM</b>																	
<b>Best estimate</b>																	
Premium provisions																	
Gross	R0060	322,776					464,038	141,815									928,629
Total recoverable from reinsurance/SPV and Finite Re after the adjustment for expected losses due to counterparty default	R0140																
Net Best Estimate of Premium Provisions	R0150	322,776					464,038	141,815									928,629
<b>Claims provisions</b>																	
Gross	R0160	1,540,363					1,038,501	2,843,448									5,422,311
Total recoverable from reinsurance/SPV and Finite Re after the adjustment for expected losses due to counterparty default	R0240																
Net Best Estimate of Claims Provisions	R0250	1,540,363					1,038,501	2,843,448									5,422,311
<b>Total Best estimate - gross</b>	R0260	1,863,139					1,502,539	2,985,262									6,350,940
<b>Total Best estimate - net</b>	R0270	1,863,139					1,502,539	2,985,262									6,350,940
<b>Risk margin</b>	R0280	182,704					378,256	407,890									968,850
<b>Amount of the transitional on Technical Provisions</b>																	
Technical Provisions calculated as a whole	R0290																
Best estimate	R0300																
Risk margin	R0310																
<b>Technical provisions - total</b>																	
Technical provisions - total	R0320	2,045,843					1,880,795	3,393,153									7,319,790
Recoverable from reinsurance contract/SPV and Finite Re after the adjustment for expected losses due to counterparty default - total	R0330	-					-	-									-
Technical provisions minus recoverables from reinsurance/SPV and Finite Re - total	R0340	2,045,843					1,880,795	3,393,153									7,319,790

Annex I

S.19.01.21

Non-life insurance claims

Total Non-Life Business

Accident year / Underwriting year	Z0010	Fire and other property damage
-----------------------------------	-------	--------------------------------

Gross Claims Paid (non-cumulative)

(absolute amount)

Development year

Year	Development year																In Current year	Sum of years (cumulative)			
	0	1	2	3	4	5	6	7	8	9	10	11	12	13	14	15&+					
Prior	R0100																				
N-14	R0110	599,019	101,625	3,145	4,368	4,652	-3,650	-795	146	-588	17	0	0	0	0	0		R0100	-7	-7	
N-13	R0120	440,273	148,691	32,068	10,658	6,146	6,847	5,654	132	-615	313	813	-1,001	82	-3			R0110	0	707,940	
N-12	R0130	539,108	186,176	31,709	-22,857	38,771	5,953	11,609	35,950	28,302	742	-249	1,112	37				R0120	-3	650,060	
N-11	R0140	407,118	71,514	-10,890	11,868	1,928	1,855	1,884	-100	81	267	-301	34					R0130	37	856,363	
N-10	R0150	358,373	81,518	30,393	6,281	4,433	5,974	3,687	812	166	-1,402	1,724						R0140	34	485,257	
N-9	R0160	506,893	257,466	28,366	26,794	6,668	13,786	1,970	494	2,020	111							R0150	1,724	491,959	
N-8	R0170	507,676	384,716	43,877	27,245	5,922	4,198	2,581	8,207	-271								R0160	111	844,569	
N-7	R0180	618,421	363,107	24,894	5,847	2,330	534	1,073	9,774									R0170	-271	984,151	
N-6	R0190	729,409	281,512	71,153	10,044	3,313	7,711	4,974										R0180	9,774	1,025,980	
N-5	R0200	625,364	390,532	25,298	7,713	2,608	3,060											R0190	4,974	1,108,115	
N-4	R0210	830,778	417,528	43,609	14,882	14,519												R0200	3,060	1,054,575	
N-3	R0220	891,753	326,864	17,844	14,094													R0210	14,519	1,321,316	
N-2	R0230	929,492	375,492	35,486														R0220	14,094	1,250,555	
N-1	R0240	1,068,103	386,491															R0230	35,486	1,340,470	
N	R0250	993,020																R0240	386,491	1,454,594	
																		R0250	993,020	993,020	
																		<b>Total</b>	<b>R0260</b>	<b>1,463,046</b>	<b>14,568,917</b>

**Gross undiscounted Best Estimate Claims Provisions**  
(absolute amount)

Year	Development year																Year end (discounted data)			
	0	1	2	3	4	5	6	7	8	9	10	11	12	13	14	15&+				
	C0200	C0210	C0220	C0230	C0240	C0250	C0260	C0270	C0280	C0290	C0300	C0310	C0320	C0330	C0340	C0350	C0360			
Prior	R0100																-6	R0100	-6	
N-14	R0110																-3	R0110	-3	
N-13	R0120																-5	R0120	-5	
N-12	R0130																-10	R0130	-10	
N-11	R0140																-25	R0140	-25	
N-10	R0150																1,594	R0150	1,599	
N-9	R0160																2,756	R0160	2,773	
N-8	R0170																3,303	R0170	3,324	
N-7	R0180																7,344	R0180	7,373	
N-6	R0190																18,924	R0190	18,997	
N-5	R0200																29,187	R0200	29,313	
N-4	R0210																44,261	R0210	44,466	
N-3	R0220																52,729	R0220	52,940	
N-2	R0230																78,357	R0230	78,611	
N-1	R0240																142,454	R0240	142,850	
N	R0250																559,914	R0250	561,526	
																		<b>Total</b>	<b>R0260</b>	<b>943,721</b>

Annex I  
S.19.01.21

Non-life insurance claims

Total Non-Life Business

Accident year / Underwriting year **Z0010** General liability reinsurance

Gross Claims Paid (non-cumulative)  
(absolute amount)

Development year

Year	0	1	2	3	4	5	6	7	8	9	10	11	12	13	14	15&+	In Current year	Sum of years (cumulative)
	C0010	C0020	C0030	C0040	C0050	C0060	C0070	C0080	C0090	C0100	C0110	C0120	C0130	C0140	C0150	C0160	C0170	C0180
Prior	R0100															206,641	R0100	206,641
N-14	R0110	370,838	183,726	80,003	62,824	20,453	18,432	12,413	37,491	-10,393	6,303	4,790	1,268	1,412	1,507	4,099	R0110	4,099
N-13	R0120	196,744	158,073	46,694	65,269	65,245	47,642	21,428	6,699	1,141	12,525	1,204	1,822	9,544	9,400		R0120	9,400
N-12	R0130	202,075	182,806	80,307	42,244	18,857	10,467	9,167	10,790	13,705	2,878	3,594	649	442			R0130	442
N-11	R0140	213,616	172,262	83,571	58,378	34,385	23,654	17,409	23,904	4,894	39,310	12,385	5,390				R0140	5,390
N-10	R0150	215,358	172,788	63,711	43,744	30,565	26,599	8,888	23,420	2,753	2,645	394					R0150	394
N-9	R0160	208,152	182,398	96,374	104,082	68,492	36,941	31,300	29,779	35,829	7,999						R0160	7,999
N-8	R0170	231,256	197,206	64,246	66,334	62,245	43,231	13,978	28,355	6,482							R0170	6,482
N-7	R0180	232,801	186,604	87,094	46,090	51,422	30,759	25,581	3,965								R0180	3,965
N-6	R0190	212,558	183,602	45,693	75,727	34,014	20,315	6,173									R0190	6,173
N-5	R0200	223,587	160,054	48,191	80,695	22,185	24,881										R0200	24,881
N-4	R0210	217,600	169,130	53,249	53,991	16,528											R0210	16,528
N-3	R0220	212,717	175,967	70,304	24,826												R0220	24,826
N-2	R0230	223,910	172,200	30,845													R0230	30,845
N-1	R0240	225,301	117,995														R0240	117,995
N	R0250	147,412															R0250	147,412
<b>Total</b>	<b>R0260</b>																<b>613,473</b>	<b>8,731,884</b>

**Gross undiscounted Best Estimate Claims Provisions**

(absolute amount)

Year	Development year																Year end (discounted data)		
	0	1	2	3	4	5	6	7	8	9	10	11	12	13	14	15&+		C0360	
Prior	R0100																	R0100	327,910
N-14	R0110															109,459		R0110	110,015
N-13	R0120														91,776			R0120	92,125
N-12	R0130												87,141					R0130	87,290
N-11	R0140											106,174						R0140	106,052
N-10	R0150										94,029							R0150	93,556
N-9	R0160									136,145								R0160	134,865
N-8	R0170								141,617									R0170	139,801
N-7	R0180							146,997										R0180	144,668
N-6	R0190						146,682											R0190	143,952
N-5	R0200					157,825												R0200	154,430
N-4	R0210				173,657													R0210	169,792
N-3	R0220			211,856														R0220	207,416
N-2	R0230		263,635															R0230	258,896
N-1	R0240	314,440																R0240	309,651
N	R0250	366,856																R0250	363,028
<b>Total</b>																	<b>R0260</b>	<b>2,843,448</b>	



Annex I  
S.19.01.21

Non-life insurance claims

Total Non-Life Business

Accident year / Underwriting year **Z0010** Income protecti...nal reinsurance

Gross Claims Paid (non-cumulative)

(absolute amount)

Year	Development year																In Current year	Sum of years (cumulative)	
	0	1	2	3	4	5	6	7	8	9	10	11	12	13	14	15&+			C0170
Prior	R0100																14,595		
N-14	R0110	309,692	400,866	195,403	97,381	38,534	3,894	6,877	-136	0	293	-255	0	0	0	7	14,595	14,595	
N-13	R0120	141,441	355,172	157,580	35,945	9,112	24,848	17,154	6,296	712	-207	456	0	0	0		7	1,052,558	
N-12	R0130	183,685	355,311	138,589	123,472	10,793	38,042	2,210	4,004	-943	78,537	-80,195	0	0			0	748,508	
N-11	R0140	251,616	315,721	135,141	64,344	14,432	4,626	1,031	97	336	368	318	32				0	853,505	
N-10	R0150	177,312	413,319	167,456	61,571	20,327	5,284	94,333	6,643	-3,743	0	1,279					32	788,062	
N-9	R0160	218,389	345,481	162,201	47,792	17,975	56,416	45	210	-679	181						1,279	943,781	
N-8	R0170	216,353	390,466	138,719	36,567	30,982	18,079	7,681	52	1,504							181	848,011	
N-7	R0180	208,572	331,916	158,974	47,151	162,790	-88,331	4,077	1,469								1,504	840,405	
N-6	R0190	197,079	341,554	147,519	194,331	27,596	2,175	3,860									1,469	826,618	
N-5	R0200	215,322	413,107	249,489	44,146	32,216	7,956										3,860	914,114	
N-4	R0210	208,745	439,297	200,541	87,972	-22,015											7,956	962,235	
N-3	R0220	481,443	192,352	209,864	15,554												-22,015	914,540	
N-2	R0230	366,366	400,485	180,940													15,554	899,213	
N-1	R0240	288,077	350,559														180,940	947,791	
N	R0250	282,508															350,559	638,637	
<b>Total</b>	<b>R0260</b>																282,508	282,508	
																	838,428	12,475,081	



Annex I  
S.23.01.01  
Own funds

**Basic own funds before deduction for participations in other financial sector as foreseen in article 68 of Delegated Regulation 2015/35**

Ordinary share capital (gross of own shares)  
Share premium account related to ordinary share capital  
Initial funds, members' contributions or the equivalent basic own - fund item for mutual and mutual-type undertakings  
Subordinated mutual member accounts  
Surplus funds  
Preference shares  
Share premium account related to preference shares  
Reconciliation reserve  
Subordinated liabilities  
An amount equal to the value of net deferred tax assets  
Other own fund items approved by the supervisory authority as basic own funds not specified above

**Own funds from the financial statements that should not be represented by the reconciliation reserve and do not meet the criteria to be classified as Solvency II own funds**

Own funds from the financial statements that should not be represented by the reconciliation reserve and do not meet the criteria to be classified as Solvency II own funds

**Deductions**

Deductions for participations in financial and credit institutions

**Total basic own funds after deductions**

**Ancillary own funds**

Unpaid and uncalled ordinary share capital callable on demand  
Unpaid and uncalled initial funds, members' contributions or the equivalent basic own fund item for mutual and mutual - type undertakings, callable on demand  
Unpaid and uncalled preference shares callable on demand  
A legally binding commitment to subscribe and pay for subordinated liabilities on demand  
Letters of credit and guarantees under Article 96(2) of the Directive 2009/138/EC  
Letters of credit and guarantees other than under Article 96(2) of the Directive 2009/138/EC  
Supplementary members calls under first subparagraph of Article 96(3) of the Directive 2009/138/EC  
Supplementary members calls - other than under first subparagraph of Article 96(3) of the Directive 2009/138/EC  
Other ancillary own funds

**Total ancillary own funds**

**Available and eligible own funds**

Total available own funds to meet the SCR  
Total available own funds to meet the MCR  
Total eligible own funds to meet the SCR  
Total eligible own funds to meet the MCR

**SCR**

**MCR**

**Ratio of Eligible own funds to SCR**

**Ratio of Eligible own funds to MCR**

	Total	Tier 1 - unrestricted	Tier 1 - restricted	Tier 2	Tier 3
	C0010	C0020	C0030	C0040	C0050
R0010	10,001,000	10,001,000			
R0030	279,768	279,768			
R0040					
R0050					
R0070					
R0090					
R0110					
R0130	231,195,332	231,195,332			
R0140					
R0160	-				-
R0180					
R0220					
R0230					
R0290	241,476,100	241,476,100			0
R0300					
R0310					
R0320					
R0330					
R0340					
R0350					
R0360					
R0370					
R0390					
R0400					
R0500	241,476,100	241,476,100	-	-	-
R0510	241,476,100	241,476,100	-	-	-
R0540	241,476,100	241,476,100	-	-	-
R0550	241,476,100	241,476,100	-	-	-
R0580	42,503,192				
R0600	10,625,798				
R0620	568.14%				
R0640	2272.55%				

**C0060**

**Reconciliation reserve**

Excess of assets over liabilities  
Own shares (held directly and indirectly)  
Foreseeable dividends, distributions and charges  
Other basic own fund items  
Adjustment for restricted own fund items in respect of matching adjustment portfolios and ring fenced funds

**Reconciliation reserve**

**Expected profits**

Expected profits included in future premiums (EPIFP) - Life business  
Expected profits included in future premiums (EPIFP) - Non- life business

**Total Expected profits included in future premiums (EPIFP)**

R0700	246,476,100				
R0710					
R0720	5,000,000				
R0730	10,280,768				
R0740					
R0760	231,195,332				
R0770	20,354				
R0780	-				
R0790	20,354				

**Annex I**

**S.25.01.21**

**Solvency Capital Requirement - for undertakings on Standard Formula**

Market risk  
 Counterparty default risk  
 Life underwriting risk  
 Health underwriting risk  
 Non-life underwriting risk  
 Diversification  
 Intangible asset risk  
**Basic Solvency Capital Requirement**

<b>Gross solvency capital requirement</b>	<b>USP</b>	<b>Simplifications</b>
<b>C0110</b>	<b>C0090</b>	<b>C0100</b>
<b>R0010</b> 41,593,965		
<b>R0020</b> 2,758,751		
<b>R0030</b> 109,391		
<b>R0040</b> 1,122,327		
<b>R0050</b> 7,167,064		
<b>R0060</b> (7,542,178)		
<b>R0070</b> -		
<b>R0100</b> 45,209,320		

**Calculation of Solvency Capital Requirement**

Operational risk  
 Loss-absorbing capacity of technical provisions  
 Loss-absorbing capacity of deferred taxes  
 Capital requirement for business operated in accordance with Art. 4 of Directive 2003/41/EC

**Solvency Capital Requirement excluding capital add-on**

Capital add-on already set

**Solvency capital requirement**

**Other information on SCR**

Capital requirement for duration-based equity risk sub-module  
 Total amount of Notional Solvency Capital Requirements for remaining part  
 Total amount of Notional Solvency Capital Requirements for ring fenced funds  
 Total amount of Notional Solvency Capital Requirements for matching adjustment portfolios  
 Diversification effects due to RFF nSCR aggregation for article 304

	<b>C0100</b>
<b>R0130</b>	503,532
<b>R0140</b>	-
<b>R0150</b>	(3,209,660)
<b>R0160</b>	-
<b>R0200</b>	42,503,192
<b>R0210</b>	-
<b>R0220</b>	42,503,192
<b>R0400</b>	-
<b>R0410</b>	-
<b>R0420</b>	
<b>R0430</b>	-
<b>R0440</b>	-

**Annex I**

**S.28.01.01**

**Minimum Capital Requirement - Only life or only non-life insurance or reinsurance activity**

**Linear formula component for non-life insurance and reinsurance obligations**

	<b>C0010</b>			
MCR <sub>NL</sub> Result	<b>R0010</b>	1,347,962		
			Net (of reinsurance/SPV) best estimate and TP calculated as a whole	Net (of reinsurance) written premiums in the last 12 months
			<b>C0020</b>	<b>C0030</b>
Medical expense insurance and proportional reinsurance	<b>R0020</b>	0	0	0
Income protection insurance and proportional reinsurance	<b>R0030</b>	1,863,139	2,327,111	
Workers' compensation insurance and proportional reinsurance	<b>R0040</b>	0	0	
Motor vehicle liability insurance and proportional reinsurance	<b>R0050</b>	0	0	
Other motor insurance and proportional reinsurance	<b>R0060</b>	0	0	
Marine, aviation and transport insurance and proportional reinsurance	<b>R0070</b>	0	0	
Fire and other damage to property insurance and proportional reinsurance	<b>R0080</b>	1,502,539	3,833,134	
General liability insurance and proportional reinsurance	<b>R0090</b>	2,985,262	1,296,802	
Credit and suretyship insurance and proportional reinsurance	<b>R0100</b>	0	0	
Legal expenses insurance and proportional reinsurance	<b>R0110</b>	0	0	
Assistance and proportional reinsurance	<b>R0120</b>	0	0	
Miscellaneous financial loss insurance and proportional reinsurance	<b>R0130</b>	0	0	
Non-proportional health reinsurance	<b>R0140</b>	0	0	
Non-proportional casualty reinsurance	<b>R0150</b>	0	0	
Non-proportional marine, aviation and transport reinsurance	<b>R0160</b>	0	0	
Non-proportional property reinsurance	<b>R0170</b>	0	0	

**Linear formula component for life insurance and reinsurance obligations**

	<b>C0040</b>			
MCR <sub>L</sub> Result	<b>R0200</b>	757,296		
			Net (of reinsurance/SPV) best estimate and TP calculated as a whole	Net (of reinsurance/SPV) total capital at risk
			<b>C0050</b>	<b>C0060</b>
Obligations with profit participation - guaranteed benefits	<b>R0210</b>	8,144,057		
Obligations with profit participation - future discretionary benefits	<b>R0220</b>	0		
Index-linked and unit-linked insurance obligations	<b>R0230</b>	0		
Other life (re)insurance and health (re)insurance obligations	<b>R0240</b>	0		
Total capital at risk for all life (re)insurance obligations	<b>R0250</b>			651,379,514

**Overall MCR calculation**

	<b>C0070</b>	
Linear MCR	<b>R0300</b>	2,105,258
SCR	<b>R0310</b>	42,503,192
MCR cap	<b>R0320</b>	19,126,436
MCR floor	<b>R0330</b>	10,625,798
Combined MCR	<b>R0340</b>	10,625,798
Absolute floor of the MCR	<b>R0350</b>	3,600,000
		<b>C0070</b>
<b>Minimum Capital Requirement</b>	<b>R0400</b>	10,625,798

# Glossary

**Base point:**

100 base points correspond to 1% and depict the change on financial markets.

**Bid-ask spread:**

The bid-ask spread is the difference between the price (bid) that a buyer is willing to pay for an asset and the price (ask) that a seller is willing to accept to sell. The wider this spread gets, the less a market is considered as liquid and active in regards to the traded security.

**Correlation:**

Measurement for the linear connection between two characteristics

**Credit spread:**

Credit spread in finance denotes the difference in profit between an interest-bearing asset and a risk-free reference interest rate of the same term. It is intended to show the additional risk premium that an investor receives if he does not wish to invest without risk.

**Derivatives:**

Derivatives are instruments of futures trading and financial instruments whose value is derived from the development of the value of one or more basic values (underlyings). The value of the derivative is oriented to the value of the underlying, in positive or negative dependency.

**Diversification effect:**

Reduction of the risk potential through diversification that results from the fact that the negative result of a risk can be compensated by the more favourable result of another risk if these risks are not fully correlated.

**Investment grade:**

An investment grade is the description for or an achievable status of companies or securities that have a good rating and thus have "investment quality". A minimum rating for investment grade is a rating of BBB (Standard & Poor's) or Baa (Moody's). Investments below this threshold are described as non-investment grade as they are mostly of a speculative nature and associated with higher risk.

**SCR ratio:**

The SCR ratio constitutes the ratio of the own funds to the regulatory solvency capital requirement pursuant to Solvency II.

**Solvency:**

Own funds of an (re-)insurance company.

**Scenario analyses:**

Analyses of the effects of a combination of different events

**SCR ratio:**

The SCR ratio constitutes the ratio of the own funds to the regulatory solvency capital requirement pursuant to Solvency II.

**Value at Risk:**

The Value at Risk is a recognised key ratio to evaluate risks. A Value at Risk of EUR 1 million with a confidence level of 95% and with a holding period of 1 year means that the potential loss within 1 year will not exceed the amount of EUR 1 million with a probability of 95%.

# Independent Auditor's Report



KPMG Limited  
Chartered Accountants  
14 Esperidon Street, 1087 Nicosia, Cyprus  
P.O. Box 21121, 1502 Nicosia, Cyprus  
T: +357 22 209000, F: +357 22 678200

**INDEPENDENT AUDITOR'S REPORT**  
**TO THE BOARD OF DIRECTORS OF**  
**GRAWE REINSURANCE LIMITED**

**REPORT ON THE AUDIT OF THE RELEVANT ELEMENTS OF THE  
SOLVENCY AND FINANCIAL CONDITION REPORT**

**Opinion**

We have audited the following Solvency II Quantitative Reporting Templates ("QRTs") contained in Annex I to Commission Implementing Regulation (EU) No 2015/2452 of 2 December 2015, of Grawe Reinsurance Limited (the "Company"), prepared as at 31 December 2021:

- S.02.01.02 - Balance sheet
- S.12.01.02 – Life and Health SLT Technical Provisions
- S.17.01.02 – Non – Life Technical Provisions
- S.23.01.01 – Own funds
- S.25.01.21 - Solvency Capital Requirement - for undertakings on Standard Formula
- S.28.01.01 – Minimum Capital Requirement – Only life or only non-life insurance or reinsurance activity

The above QRTs are collectively referred to for the remainder of this report as "the relevant QRTs of the Solvency and Financial Condition Report".

In our opinion, the information in the relevant QRTs of the Solvency and Financial Condition Report as at 31 December 2021 is prepared, in all material respects, in accordance with the Insurance and Reinsurance Services and other Related Issues Law of 2016, the Commission Delegated Regulation (EU) 2015/35, the Commission Delegated Regulation (EU) 2016/467, the relevant EU Commission's Implementing Regulations and the relevant Orders of the Superintendent of Insurance (collectively "the Framework").

Limassol  
P.O. Box 50161, 3601  
T: +357 25 869000  
F: +357 25 363842

Pepfos  
P.O. Box 60288, 8101  
T: +357 26 943050  
F: +357 26 943062

Polis Chrysochous  
P.O. Box 66014, 8330  
T: +357 26 322098  
F: +357 26 322722

Larnaca  
P.O. Box 40075, 6300  
T: +357 24 200000  
F: +357 24 200200

Paralimni / Ayia Napa  
P.O. Box 33200, 5311  
T: +357 23 820080  
F: +357 23 820084





## **Basis for Opinion**

We conducted our audit in accordance with International Standards on Auditing (ISAs). Our responsibilities under those standards are further described in the *Auditor's Responsibilities for the Audit of the relevant QRTs of the Solvency and Financial Condition Report* section of our report. We are independent of the Company in accordance with the International Ethics Standards Board for Accountants' Code of Ethics for Professional Accountants (IESBA Code) together with the ethical requirements that are relevant to our audit of the relevant QRTs of the Solvency and Financial Condition Report in Cyprus, and we have fulfilled our other ethical responsibilities in accordance with these requirements and the IESBA Code. We believe that the audit evidence we have obtained is sufficient and appropriate to provide a basis for our opinion.

## **Emphasis of Matter**

We draw attention to the 'Valuation for solvency purposes' and 'Capital Management' sections of the Solvency and Financial Condition Report, which describe the basis of preparation. The Solvency and Financial Condition Report is prepared in compliance with the Framework, and therefore in accordance with a special purpose financial reporting framework. As a result, the Solvency and Financial Condition Report may not be suitable for another purpose. Our opinion is not modified in respect of this matter.

## **Other information**

The Board of Directors is responsible for the Other information. The Other information comprises certain narrative sections and certain QRTs of the Solvency and Financial Condition Report as listed below:

Narrative sections:

- Business and performance
- Valuation for solvency purposes
- Capital management

QRTs (contained in Annex I to Commission Implementing Regulation (EU) No 2015/2452 of 2 December 2015):

- S.05.01.02 - Premiums, claims and expenses by line of business
- S.05.02.01 - Premiums, claims and expenses by country

Our opinion on the relevant QRTs of the Solvency and Financial Condition Report does not cover the Other information listed above and we do not express any form of assurance conclusion thereon.



In connection with our audit of the Solvency and Financial Condition Report, our responsibility is to read the Other information and, in doing so, consider whether the Other information is materially inconsistent with the relevant elements of the Solvency and Financial Condition Report, or our knowledge obtained in the audit, or otherwise appears to be materially misstated. If, based on the work we have performed, we conclude that there is a material misstatement of this Other information, we are required to report that fact. We have nothing to report in this regard.

### **Responsibilities of the Board of Directors for the Solvency and Financial Condition Report**

The Board of Directors is responsible for the preparation of the Solvency and Financial Condition Report in accordance with the Framework.

The Board of Directors is also responsible for such internal control as the Board of Directors determines is necessary to enable the preparation of a Solvency and Financial Condition Report that is free from material misstatement, whether due to fraud or error.

In preparing the Solvency and Financial Condition Report, the Board of Directors is responsible for assessing the Company's ability to continue as a going concern, disclosing, as applicable, matters related to going concern and using the going concern basis of accounting unless the Board of Directors either intends to liquidate the Company or to cease operations, or has no realistic alternative but to do so.

The Board of Directors is responsible for overseeing the Company's financial reporting process.

### **Auditor's Responsibilities for the Audit of the relevant QRTs of the Solvency and Financial Condition Report**

Our objectives are to obtain reasonable assurance about whether the relevant QRTs of the Solvency and Financial Condition Report are free from material misstatement, whether due to fraud or error, and to issue an auditor's report that includes our opinion. Reasonable assurance is a high level of assurance, but it is not a guarantee that an audit conducted in accordance with ISAs will always detect a material misstatement when it exists. Misstatements can arise from fraud or error and are considered material if, individually or in the aggregate, they could reasonably be expected to influence the economic decisions of users taken on the basis of the Solvency and Financial Condition Report.

As part of an audit in accordance with ISAs, we exercise professional judgment and maintain professional skepticism throughout the audit. We also:

- Identify and assess the risks of material misstatement of the relevant QRTs of the Solvency and Financial Condition Report, whether due to fraud or error, design and perform audit procedures responsive to those risks, and obtain audit evidence that is sufficient and appropriate to provide a basis for our opinion. The risk of not detecting a material misstatement resulting from fraud is higher than for one resulting from error, as fraud may involve collusion, forgery, intentional omissions, misrepresentations, or the override of internal control.



- Obtain an understanding of internal control relevant to the audit in order to design audit procedures that are appropriate in the circumstances, but not for the purpose of expressing an opinion on the effectiveness of the Company's internal control.
- Evaluate the appropriateness of the basis of preparation used and the reasonableness of accounting estimates and related disclosures made by the Board of Directors.
- Conclude on the appropriateness of the Board of Directors' use of the going concern basis of accounting and, based on the audit evidence obtained, whether a material uncertainty exists related to events or conditions that may cast significant doubt on the Company's ability to continue as a going concern. If we conclude that a material uncertainty exists, we are required to draw attention in our auditor's report to the related disclosures in the Solvency and Financial Condition Report or, if such disclosures are inadequate, to modify our opinion. Our conclusions are based on the audit evidence obtained up to the date of our auditor's report. However, future events or conditions may cause the Company to cease to continue as a going concern.

We communicate with the Board of Directors regarding, among other matters, the planned scope and timing of the audit and significant audit findings, including any significant deficiencies in internal control that we identify during our audit.

#### **Other Matter**

Our report is intended solely for the Board of Directors of the Company and should not be used by any other parties. We do not, in giving this opinion, accept or assume responsibility for any other purpose or to any other person to whose knowledge this report may come to.

*KPMG Limited*

KPMG Limited  
Certified Public Accountants and Registered Auditors  
14 Esperidon Street  
1087 Nicosia  
Cyprus

6 April 2022